



Advanced Power Meter
EM235/PM335/PM17X PRO Series

IEC 61850 Communications Protocol

Reference Guide

Every effort has been made to ensure that the material herein is complete and accurate. However, the manufacturer is not responsible for any mistakes in printing or faulty instructions contained in this book. Notification of any errors or misprints will be received with appreciation.

For further information regarding a particular installation, operation or maintenance of equipment, contact the manufacturer or your local representative or distributor.

REVISION HISTORY

A1	Dec 2020	Initial release
A2	Jul 2024	PM17X PRO added

Table of Contents

Chapter 1	General.....	4
Chapter 2	ACSI (Abstract Communication Service Interface) Conformance Statement 5	
2.1	ACSI basic conformance statement	5
2.2	ACSI models conformance statement.....	6
2.3	ACSI service conformance statement	8
Chapter 3	MICS - Model Implementation Conformance Statement.....	11
3.1	Model conformance	11
3.2	Common data attributes classes	11
3.3	Common data classes	13
3.4	Logical devices and logical nodes	18
3.4.1	System logical nodes.....	18
3.4.2	Logical nodes for disturbance recorders related functions	19
3.4.3	Logical nodes for generic reference	20
3.4.4	Logical nodes for metering and measurement	22
Chapter 4	PICS – Protocol Implementation Conformance Statement	31
4.1	Profile conformance.....	31
4.2	MMS conformance.....	32
4.3	GOOSE conformance statement (GOOSE Services)	35
4.4	GSSE conformance statement (GSSE Services).....	35
4.5	SCL services (SCL conformance)	35
Chapter 5	PIXIT - Protocol Implementation Extra Information for Testing ..	36
5.1	Device configuration	36
5.2	ACSI models.....	36
5.3	Impact of the device settings	48
Chapter 6	Configuring IEC 61850	50
6.1	Licensing IEC 61850	50
6.2	Configuring IED Properties.....	50
6.3	Configuring Datasets	51
6.4	Configuring Report Control Blocks	53
6.5	Configuring the GOOSE Publisher	54
6.6	Configuring the GOOSE Subscriber	55
6.7	Configuring Report Deadbands	58

Chapter 1 General

EM235/PM335/PM17X PRO is provided with an embedded IEC 61850 server compliant with the IEC 61850 set of standards.

This document contains the IEC 61850 conformance statements that give the summary of the device data object model, protocol implementations and communication capabilities of the PRO.

For detailed information on operating the EM235/PM335/PM17X PRO and communication settings refers to EM235/PM335/PM17X PRO Operation Manual.

IMPORTANT

Control commands addressed to the boGGIO general binary output nodes will be rejected until the internal BOOLEAN variable REMOTE MODE is set to TRUE via a setpoint logic equation. See Controls in Section 5.3 for details.

Chapter 2 ACSI (Abstract Communication Service Interface) Conformance Statement

This chapter contains the ACSI conformance statement as defined in Annex A of IEC 61850-7-2 that specifies the device communication features mapped to an SCSM (Specific Communication Service Mapping).

2.1 ACSI basic conformance statement

Services		Client/ Subscriber	Server/ Publisher	Value/ Comments
Client-server roles				
B11	Server side (of TWO-PARTY-APPLICATION-ASSOCIATION)		● c1	
B12	Client side of (TWO-PARTY-APPLICATION-ASSOCIATION)			
SCSMs supported				
B21	SCSM: IEC 61850-8-1 used		●	
B22	SCSM: IEC 61850-9-1 used			
B23	SCSM: IEC 61850-9-2 used			
B24	SCSM: other			
Generic substation event model (GSE)				
B31	Publisher side		●	
B32	Subscriber side	●		
Transmission of sampled value model (SVC)				
B41	Publisher side			
B42	Subscriber side			
c1– declared support for LOGICAL-DEVICE model ● – supported				

2.2 ACSI models conformance statement

Services		Client/ Subscriber	Server/ Publisher	Value/ Comments
If Server side (B11) supported				
M1	Logical device		● c2	
M2	Logical node		● c3	
M3	Data		● c4	
M4	Data set		● c5	
M5	Substitution		●	
M6	Setting group control			
Reporting				
M7	Buffered report control		●	
M7-1	sequence-number		●	
M7-2	report-time-stamp		●	
M7-3	reason-for-inclusion		●	
M7-4	data-set-name		●	
M7-5	data-reference		●	
M7-6	buffer-overflow		●	
M7-7	entryID		●	
M7-8	BufTm		●	
M7-9	IntgPd		●	
M7-10	GI		●	
M8	Unbuffered report control		●	
M8-1	sequence-number		●	
M8-2	report-time-stamp		●	
M8-3	reason-for-inclusion		●	
M8-4	data-set-name		●	
M8-5	data-reference		●	
M8-6	BufTm		●	
M8-7	IntgPd		●	
M8-8	GI		●	
	Logging			
M9	Log control			
M9-1	IntgPd			

Services		Client/ Subscriber	Server/ Publisher	Value/ Comments
M10	Log			
M11	Control		●	
If GSE (B31/B32) is supported				
	GOOSE			
M12-1	entryID			
M12-2	DataRefInc			
M13	GSSE			
If SVC (B41/B42) is supported				
M14	Multicast SVC			
M15	Unicast SVC			
M16	Time		●	Time source with required accuracy shall be available
M17	File Transfer		●	
c2 – declared support for LOGICAL-NODE model c3 – declared support for DATA model c4 – declared support for DATA-SET, Report, or Time model c5 – declared support for Report model ● – supported				

2.3 ACSI service conformance statement

AA – APPLICATION-ASSOCIATION; TP – TWO- PARTY; MC – Multicast

Services	AA: TP/MC	Client/ Subscriber	Server/ Publisher	Comments
Server (Clause 6)				
S1	ServerDirectory	TP	•	
Application association (Clause 7)				
S2	Associate		•	
S3	Abort		•	
S4	Release		•	
Logical device (Clause 8)				
S5	LogicalDeviceDirectory	TP	•	
Logical node (Clause 9)				
S6	LogicalNodeDirectory	TP	•	
S7	GetAllDataValues	TP	•	
Data (Clause 10)				
S8	GetDataValues	TP	•	
S9	SetDataValues	TP		
S10	GetDataDirectory	TP	•	
S11	GetDataDefinition	TP	•	
Data set (Clause 11)				
S12	GetDataSetValues	TP	•	
S13	SetDataSetValues	TP	•	
S14	CreateDataSet	TP	•	
S15	DeleteDataSet	TP	•	
S16	GetDataSetDirectory	TP	•	
Substitution (Clause 12)				
S17	SetDataValues	TP	•	Applied to
Setting group control (Clause 13)				
S18	SelectActiveSG	TP		
S19	SelectEditSG	TP		
S20	SetSGValues	TP		
S21	ConfirmEditSGValues	TP		
S22	GetSGValues	TP		
S23	GetSGCBValues	TP		

Services		AA: TP/MC	Client/ Subscriber	Server/ Publisher	Comments
Reporting (Clause 14)					
Buffered report control block (BRCB)					
S24	Report	TP		•	
S24-1	data-change (dchg)			•	
S24-2	qchg-change (qchg)			•	
S24-3	data-update (dupd)			•	
S25	GetBRCBValues	TP		•	
S26	SetBRCBValues	TP		•	
Unbuffered report control block (URCB)					
S27	Report	TP		•	
S27-1	data-change (dchg)			•	
S27-2	qchg-change (qchg)			•	
S27-3	data-update (dupd)			•	
S28	GetURCBValues	TP		•	
S29	SetURCBValues	TP		•	
Logging (Clause 14)					
Log control block					
S30	GetLCBValues	TP			
S31	SetLCBValues	TP			
Log					
S32	QueryLogByTime	TP			
S33	QueryLogAfter	TP			
S34	GetLogStatusValues	TP			
Generic substation event model (GSE) (Clause 15)					
GOOSE-CONTROL-BLOCK					
S35	SendGOOSEMessage	MC		•	
S36	GetGoReference	TP			
S37	GetGOOSEElementNumber	TP			
S38	GetGoCBValues	TP		•	
S39	SetGoCBValues	TP		•	
GSSE-CONTROL-BLOCK					
S40	SendGSSEMessage	MC			
S41	GetGsReference	TP			

Services		AA: TP/MC	Client/ Subscriber	Server/ Publisher	Comments
S42	GetGSSEElementNumber	TP			
S43	GetGsCBValues	TP			
S44	SetGsCBValues	TP			
Transmission of sampled value model (SVC) (Clause 16)					
Multicast SVC					
S45	SendMSVMessage	MC			
S46	GetMSVCBValues	TP			
S47	SetMSVCBValues	TP			
Unicast SVC					
S48	SendUSVMessage	TP			
S49	GetUSVCBValues	TP			
S50	SetUSVCBValues	TP			
Control (Clause 17)					
S51	Select	TP		●	For boGGIO class nodes
S52	SelectWithValue	TP			
S53	Cancel	TP		●	For boGGIO class nodes
S54	Operate	TP		●	
S55	Command-Termination	TP			
S56	TimeActivated-Operate	TP			
File transfer (Clause 20)					
S57	GetFile	TP		●	
S58	SetFile	TP			
S59	DeleteFile	TP			
S60	GetFileAttributeValues	TP		●	
Time (Clause 18)					
T1	Time resolution of internal clock (nearest value of 2** <i>-n</i> in seconds)			n=10 (T1)	
T2	Time accuracy of internal clock			n=10 (T1)	
T3	Supported TimeStamp resolution (nearest value of 2** <i>-n</i> in seconds)			n=10 (T1)	
● – supported					

Chapter 3 MICS - Model Implementation Conformance Statement

This chapter contains the MICS conformance statement as required by IEC 61850-10. It lists data object model elements supported by the EM133/EM235/PM335/PM17X PRO and provides definitions of the logical nodes, common data classes and data attribute types as defined in IEC 61850-7-3 and IEC 61850-7-4.

3.1 Model conformance

The model conformance of EM235/PM335/PM17X PRO is described by its ICD file.

3.2 Common data attributes classes

The following tables indicate which fields are supported in each Common Data Attribute Class. Not listed fields are either optional (O) or conditional (C) and are not supported by EM235/PM335/PM17X PRO. Mandatory fields (M) are always present.

Quality

Attribute name	Attribute type	Value/Range	M/O/C	Comments
validity	CODED ENUM	good invalid	M	Supported
detailQual	PACKED LIST		M	Supported
overflow	BOOLEAN	FALSE	M	Defaulted
outOfRange	BOOLEAN	TRUE FALSE	M	Supported
badReference	BOOLEAN	TRUE FALSE	M	Supported
oscillatory	BOOLEAN	FALSE	M	Defaulted
failure	BOOLEAN	TRUE FALSE	M	Supported
oldData	BOOLEAN	FALSE	M	Defaulted
inconsistent	BOOLEAN	FALSE	M	Defaulted
inaccurate	BOOLEAN	FALSE	M	Defaulted
source	CODED ENUM	process	M	Defaulted
test	BOOLEAN	FALSE	M	Defaulted
operatorBlocked	BOOLEAN	FALSE	M	Defaulted

Analog value

Attribute name	Attribute type	Value/Range	M/O/C	Comments
i	INT32	integer value	C	
f	FLOAT32	floating point value	C	

Only one of the attributes may be present for a given instance of DATA.

Configuration of analogue value

Common data attribute class is not supported.

Range configuration

Common data attribute class is not supported.

Step position with transient indication

Common data attribute class is not supported.

Pulse configuration

Attribute Name	Attribute Type	Value/Range	M/O/C	Comments
cmdQual	ENUMERATED	pulse persistent	M	For boGGIO pulse output, a relay must be set to pulse mode via the device Relay Setup
onDur	INT32U		M	boGGIO class nodes: default = 2000 ms
offDur	INT32U		M	Not supported
numPls	INT32U	1	M	Read only

Unit definition

Attribute Name	Attribute Type	Value/Range	M/O/C	Comments
SIUnit	ENUMERATED	See IEC61850-7-3, Tables A.1 to A.4 in Annex A	M	
multiplier	ENUMERATED	See IEC61850-7-3, Table A.5 in Annex A	O	

The default value of the multiplier is 0 and the multiplier value is 1: $10^{**0} = 1$.

Vector

Attribute Name	Attribute Type	Value/Range	M/O/C	Comments
mag	AnalogueValue		M	Only one of the attributes of the AnalogueValue may be present for a given instance of DATA.
ang	AnalogueValue		O	ang attribute is used for data objects of the phzrMMXU LN only (see below)

Point definition

Common data attribute class is not supported.

CtlModels definition

Attribute Value	Comments
status-only	Not controllable SPS, DPS and INS
direct-with-normal-security	Controllable SPC. Supported by boGGIO and evfGGIO class nodes.
sbo-with-normal-security	Controllable SPC. Supported by boGGIO and evfGGIO class nodes.
direct-with-enhanced-security	Not supported
sbo-with-enhanced-security	Not supported

SboClasses definition

Attribute Value	Comments
operate-once	
operate-many	Not supported

3.3 Common data classes

The following tables indicate mandatory, conditional and optional attributes of each Common Data Class (CDC) that are supported by EM235/PM335/PM17X PRO. Mandatory attributes (M) are always present.

Single point status (SPS)

Attribute Name	Attribute Type	FC	M/O/C	Comments
stVal	BOOLEAN	ST	M	
q	Quality	ST	M	
t	TimeStamp	ST	M	
d	VISIBLE STRING64	DC	O	

Double point status (DPS)

Attribute Name	Attribute Type	FC	M/O/C	Comments
stVal	CODED ENUM	ST	M	
q	Quality	ST	M	
t	TimeStamp	ST	M	

Integer status (INS)

Attribute Name	Attribute Type	FC	M/O/C	Comments
stVal	INT32	ST	M	
q	Quality	ST	M	
t	TimeStamp	ST	M	
d	VISIBLE STRING64	DC	O	

Protection activation information (ACT)

Common data class is not supported.

Directional protection activation information (ACD)

Common data class is not supported.

Security violation counting (SEC)

Common data class is not supported.

Binary counter reading (BCR)

Attribute Name	Attribute Type	FC	M/O/C	Comments
actVal	INT32	ST	M	
q	Quality	ST	M	
t	TimeStamp	ST	M	
units	Unit	CF	O	
pulsQty	FLOAT32	CF	M	
d	VISIBLE STRING64	DC	O	

Measured value (MV)

Attribute Name	Attribute Type	FC	M/O/C	Comments
mag	AnalogueValue	MX	M	Only one of the attributes (i or f) of the AnalogueValue may be present for a given instance of DATA
q	Quality	MX	M	
t	TimeStamp	MX	M	
units	Unit	CF	O	
db	INT32U	CF	O	
d	VISIBLE STRING64	DC	O	

Complex measured value (CMV)

Attribute Name	Attribute Type	FC	M/O/C	Comments
cVal	Vector	MX	M	
q	Quality	MX	M	
t	TimeStamp	MX	M	
units	Unit	CF	O	
db	INT32U	CF	O	
d	VISIBLE STRING64	DC	O	

Sampled value (SAV)

Common data class is not supported.

WYE

Attribute Name	Attribute Type	FC	M/O/C	Comments
phsA	CMV		C	
phsB	CMV		C	
phsC	CMV		C	
neut	CMV		C	Signed with (*) where available

Delta (DEL)

Attribute Name	Attribute Type	FC	M/O/C	Comments
phsAB	CMV		C	
phsBC	CMV		C	
phsCA	CMV		C	

Sequence (SEQ)

Attribute Name	Attribute Type	FC	M/O/C	Comments
c1	CMV		M	
c2	CMV		M	
c3	CMV		M	
seqT	ENUMERATED	MX	M	pos-neg-zero dir-quad-zero

Harmonic value (HMV)

Common data class is not supported.

Harmonic value for WYE (HWYE)

Attribute Name	Attribute Type	FC	M/O/C	Comments
q	Quality	MX	M	
t	TimeStamp	MX	M	
phsAHar	ARRAY[0..numHar] OF Vector	MX	M	
phsBHar	ARRAY[0..numHar] OF Vector	MX	O	
phsCHar	ARRAY[0..numHar] OF Vector	MX	O	
numHar	INT16U	CF	M	numHar = 63 (no subharmonics)
numCyc	INT16U	CF	M	numCyc = 1
units	Unit	CF	O	
evalTm	INT16U	CF	M	evalTm = nominal period
frequency	FLOAT32	CF	M	frequency = nominal frequency
d	VISIBLE STRING64	DC	O	

Harmonic value for DEL (HDEL)

Attribute Name	Attribute Type	FC	M/O/C	Comments
q	Quality	MX	M	
t	TimeStamp	MX	M	
phsABHar	ARRAY[0..numHar] OF Vector	MX	M	
phsBCHar	ARRAY[0..numHar] OF Vector	MX	O	
phsCAHar	ARRAY[0..numHar] OF Vector	MX	O	
numHar	INT16U	CF	M	numHar = 63 (no subharmonics)
numCyc	INT16U	CF	M	numCyc = 1
units	Unit	CF	O	
evalTm	INT16U	CF	M	evalTm = nominal period
frequency	FLOAT32	CF	M	frequency = nominal frequency
d	VISIBLE STRING64	DC	O	

Controllable single point (SPC)

Applied to boGGIO and evfGGIO class nodes.

Attribute Name	Attribute Type	FC	M/O/C	Comments
ctlVal	BOOLEAN	CO	C	See notes below for relay operation explanation
stVal	BOOLEAN	ST	M	
q	Quality	ST	M	
t	TimeStamp	ST	M	
d	VISIBLE STRING64	DC	O	
pulseConfig	PulseConfig	CF	O	
ctlModel	CtlModels	CF	M	

Relay output operation depends on the configurable cmdQual attribute value (see pulseConfig) and the relay operation mode configured in the device via the Relay Setup as described in the following table.

cmdQual	Relay operation mode	Relay output operation
pulse	Pulse/KYZ	Pulse output. ctlVal = 1 – generates a pulse (normal/KYZ) with a duration defined by the onDur attribute; ctlVal = 0 – no effect
pulse	Latched/unlatched	No effect
persistent	Pulse/KYZ	Pulse output. ctlVal = 1 – generates a pulse (normal/KYZ) with a duration defined by the pulse width pre-configured in the device setup; ctlVal = 0 – no effect
persistent	Latched/unlatched	Latched output. ctlVal = 1 – switch on, ctlVal = 0 – switch off

Controllable double point (DPC)

Attribute Name	Attribute Type	FC	M/O/C	Comments
ctlVal	BOOLEAN	CO	C	
stVal	CODED ENUM	ST	M	
q	Quality	ST	M	
t	TimeStamp	ST	M	
subEna	BOOLEAN	SV	PICS_SUBST	
subVal	CODED ENUM	SV	PICS_SUBST	
subQ	Quality	SV	PICS_SUBST	
pulseConfig	PulseConfig	CF	O	
ctlModel	CtlModels	CF	M	
d	VISIBLE STRING64	DC	O	

Controllable integer status (INC)

Attribute Name	Attribute Type	FC	M/O/C	Comments
ctlVal	INT32	CO	C	
stVal	INT32	ST	M	
q	Quality	ST	M	
t	TimeStamp	ST	M	
d	VISIBLE STRING64	DC	O	

Binary controlled step position information (BSC)

Common data class is not supported.

Binary controlled step position information (ISC)

Common data class is not supported.

Controllable analog set point information (APC)

Common data class is not supported.

Single point setting (SPG)

Common data class is not supported.

Integer status setting (ING)

Common data class is not supported.

Analog setting (ASG)

Common data class is not supported.

Setting curve (CURVE)

Common data class is not supported.

Device name plate (DPL)

Attribute Name	Attribute Type	FC	M/O/C	Comments
vendor	VISIBLE STRING255	DC	M	
model	VISIBLE STRING255	DC	O	
location	VISIBLE STRING255	DC	O	

Logical node name plate (LPL)

Attribute Name	Attribute Type	FC	M/O/C	Comments
vendor	VISIBLE STRING255	DC	M	
swRev	VISIBLE STRING255	DC	M	
d	VISIBLE STRING255	DC	M	
configRev	VISIBLE STRING255	DC	C	LLN0 only
ldNs	VISIBLE STRING255	DC	C	LLN0 only

Curve shape description (CSD)

Common data class is not supported.

3.4 Logical devices and logical nodes

EM235/PM335/PM17X PRO IEC 61850 server provides a single logical device MET1.

EM235/PM335/PM17X PRO IEC 61850 server provides two logical devices CTRL and MET1 described in the following table. The domain name of a logical device can incorporate a configurable IED name (see Section 6.2) that will precede a logical device name.

Logical device	Description
CTRL	Control elements
MET1	Metering, measurements and general digital input and output elements

Logical devices contain logical nodes LPHD and LLN0 dedicated to EM235/PM335/PM17X PRO unit, and a set of functional logical nodes for functions supported by EM235/PM335/PM17X PRO. Logical node names are fixed.

The following tables describe attributes of logical nodes. Not listed attributes are either optional (O), or conditional (C) and are not supported by the EM235/PM335/PM17X PRO. Mandatory (M) attributes are always present.

EM235/PM335/PM17X PRO also uses extension (E) attributes for some logical nodes.

3.4.1 System logical nodes

Physical device information LPHD

Attribute name	Attribute type	Explanation/Value	T	M/O/C/E	Comments
LNNName	Object name	LPHD1		M	
PhyNam	DPL	Physical device name plate		M	
PhyHealth	INS	Physical device health		M	
Proxy	SPS	Indicates if this LN is a proxy		M	Defaulted to FALSE

Logical node zero LLN0

Attribute name	Attribute type	Explanation/Value	T	M/O/C/E	Comments
LNNName	Object name	LLN0		M	
Common Logical Node Information					
Mod	INC	Mode		M	
Beh	INS	Behavior		M	
Health	INS	Health		M	
NamePlt	LPL	Name plate		M	

GOOSE subscription status CTRL/sbsLGOS1-sbsLGOS20

Attribute name	Attribute type	Explanation/Value	T	M/O/C/E	Comments
LNNName	Object name	sbsLGOS1...sbsGOS20		M	
Common Logical Node Information					
Mod	INC	Mode		M	
Beh	INS	Behavior		M	
Health	INS	Health		M	
NamePlt	LPL	Name plate		M	
Status Information					
SbsSt	SPS	Status of the subscription		M	TRUE = active FALSE = not active
LastStNum	INS	Last state number received		O	
ConfRevNum	INS	Expected configuration revision number		O	

3.4.2 Logical nodes for disturbance recorders related functions

Disturbance recorders MET1/drRDRE1-drRDRE8

Attribute name	Attribute type	Explanation/Value	T	M/O/C/E	Comments
LNNName	Object name	drRDRE1...drRDRE8		M	
Common Logical Node Information					
Mod	INC	Mode		M	
Beh	INS	Behavior		M	
Health	INS	Health		M	
NamePlt	LPL	Name plate		M	
Status Information					
RcdMade	SPS	Recording made		M	Set to TRUE when at least one disturbance waveform is available for a read.
FltNum	INS	Fault number		M	Indicates the last waveform series number available in a disturbance recorder.

3.4.3 Logical nodes for generic reference

External (GOOSE) indication status CTRL/extGGIO1

Attribute name	Attribute type	Explanation/Value	T	M/O/C/E	Comments
LNNName	Object name	extGGIO1		M	
Common Logical Node Information					
Mod	INC	Mode		M	
Beh	INS	Behavior		M	
Health	INS	Health		M	
NamePlt	LPL	Name plate		M	
Status Information					
Ind1...Ind128	SPS	General indication		O	

Digital inputs MET1/biGGIO1

Attribute name	Attribute type	Explanation/Value	T	M/O/C/E	Comments
LNNName	Object name	biGGIO1		M	
Common Logical Node Information					
Mod	INC	Mode		M	
Beh	INS	Behavior		M	
Health	INS	Health		M	
NamePlt	LPL	Name plate		M	
Status Information					
Ind1	SPS	General indication: Digital inputs DI1-DI16		O	TRUE = closed FALSE = open

Relay outputs MET1/boGGIO1

Attribute name	Attribute type	Explanation/Value	T	M/O/C/E	Comments
LNNName	Object name	boGGIO1		M	
Common Logical Node Information					
Mod	INC	Mode		M	
Beh	INS	Behavior		M	
Health	INS	Health		M	
NamePlt	LPL	Name plate		M	
Loc	SPS	Local operation		O	
Controls					
SPCSO1	SPC	Single point controllable status output: Relay outputs RO1-RO8 (boGGIO1)		O	

Event flags MET1/evfGGIO1 – evfGGIO2

Attribute name	Attribute type	Explanation/Value	T	M/O/C/E	Comments
LNNName	Object name	evfGGIO1, evfGGIO2		M	
Common Logical Node Information					
Mod	INC	Mode		M	
Beh	INS	Behavior		M	
Health	INS	Health		M	
NamePlt	LPL	Name plate		M	
Loc	SPS	Local operation		O	
Controls					
SPCSO1...SPCSO32	SPC	Single point controllable status output: Event flags FLG1-FLG32 (evfGGIO1) Event flags FLG33-FLG64 (evfGGIO2)		O	

Setpoint status MET1/spGGIO1- spGGIO2

Attribute name	Attribute type	Explanation/Value	T	M/O/C/E	Comments
LNNName	Object name	spGGIO1, spGGIO2		M	
Common Logical Node Information					
Mod	INC	Mode		M	
Beh	INS	Behavior		M	
Health	INS	Health		M	
NamePlt	LPL	Name plate		M	
Status Information					
Ind1...Ind32	SPS	General indication: Setpoint SP1-SP32 (spGGIO1) Setpoint SP33-SP64 (spGGIO2)		O	TRUE = setpoint operated FALSE = setpoint released

Analog inputs MET1/aiGGIO1-aiGGIO2

Attribute name	Attribute type	Explanation/Value	T	M/O/C/E	Comments
LNNName	Object name	aiGGIO1, aiGGIO2		M	
Common Logical Node Information					
Mod	INC	Mode		M	
Beh	INS	Behavior		M	
Health	INS	Health		M	
NamePlt	LPL	Name plate		M	
Measured Values					
AnIn1...AnIn8	MV	Scaled analog inputs: Analog inputs AI1-AI8 (aiGGIO1) Analog inputs AI9-AI16 (aiGGIO2)		O	

3.4.4 Logical nodes for metering and measurement

Energy counters MET1/engMMTR1

Attribute name	Attribute type	Explanation/Value	T	M/O/C/E	Comments
LNNName	Object name	engMMTR1		M	
Common Logical Node Information					
Mod	INC	Mode		M	
Beh	INS	Behavior		M	
Health	INS	Health		M	
NamePlt	LPL	Name plate		M	
Measured values					
TotVAh	BCR	Apparent energy		O	Total
TotWh	BCR	Net real energy		O	Net
TotVARh	BCR	Net reactive energy		O	Net
SupWh	BCR	Real energy supply		O	Exported
SupVARh	BCR	Reactive energy supply		O	Exported
DmdWh	BCR	Real energy demand		O	Imported
DmdVARh	BCR	Reactive energy demand		O	Imported

Harmonic demands MET1/demMHAI1

Attribute name	Attribute type	Explanation/Value	T	M/O/C/E	Comments
LNNName	Object name	demMHAI1		M	
Common Logical Node Information					
Mod	INC	Mode		M	
Beh	INS	Behavior		M	
Health	INS	Health		M	
NamePlt	LPL	Name plate		M	
Measured values					
ThdPhV	WYE	Voltage THD demand for phase to ground		O	In 4LN3, 3LN3 and 3BLN3 wiring modes
ThdPPV	DEL	Voltage THD demand for phase to phase		O	In 4LL3, 3LL3, 3BLL3, 3DIR2, 3OP2 and 3OP3 wiring modes
ThdA	WYE	Current THD demand		O	
TddA	WYE	Current TDD demand per IEEE 519		O	
ThdAuxA	MV	Current THD demand for auxiliary current input I4		E	
TddAuxA	MV	Current TDD demand for auxiliary current input I4		E	

Sequence of harmonics MET1/hrmMHA1

Attribute name	Attribute type	Explanation/Value	T	M/O/C/E	Comments
LNNName	Object name	hrmMHA1		M	
Common Logical Node Information					
Mod	INC	Mode		M	
Beh	INS	Behavior		M	
Health	INS	Health		M	
NamePlt	LPL	Name plate		M	
Measured values					
HA	HWYE	Sequence of harmonics current		O	
HPhV	HWYE	Sequence of harmonics phase to ground voltages		O	In 4LN3, 3LN3 and 3BLN3 wiring modes
HPPV	HDEL	Sequence of harmonics phase to phase voltages		O	In 4LL3, 3LL3, 3BLL3, 3DIR2, 3OP2 and 3OP3 wiring modes

Total harmonics MET1/ocvMHA1

Attribute name	Attribute type	Explanation/Value	T	M/O/C/E	Comments
LNNName	Object name	ocvMHA1		M	
Common Logical Node Information					
Mod	INC	Mode		M	
Beh	INS	Behavior		M	
Health	INS	Health		M	
NamePlt	LPL	Name plate		M	
Measured values					
ThdPhV	WYE	Voltage THD for phase to ground		O	In 4LN3, 3LN3 and 3BLN3 wiring modes
ThdPPV	DEL	Voltage THD for phase to phase		O	In 4LL3, 3LL3, 3BLL3, 3DIR2, 3OP2 and 3OP3 wiring modes
ThdA	WYE	Current THD		O	
HKf	WYE	K-Factor		O	
TddA	WYE	Current TDD per IEEE 519		O	

3-second total harmonics MET1/osvMHA1

Attribute name	Attribute type	Explanation/Value	T	M/O/C/E	Comments
LNNName	Object name	osvMHA1		M	
Common Logical Node Information					
Mod	INC	Mode		M	
Beh	INS	Behavior		M	
Health	INS	Health		M	
NamePlt	LPL	Name plate		M	
Measured values					
ThdPhV	WYE	Voltage THD for phase to ground		O	In 4LN3, 3LN3 and 3BLN3 wiring modes
ThdPPV	DEL	Voltage THD for phase to phase		O	In 4LL3, 3LL3, 3BLL3, 3DIR2, 3OP2 and 3OP3 wiring modes
ThdA	WYE	Current THD		O	
HKf	WYE	K-Factor		O	
TddA	WYE	Current TDD per IEEE 519		O	

Present demands MET1/demMMXU1

Attribute name	Attribute type	Explanation/Value	T	M/O/C/E	Comments
LNNName	Object name	demMMXU1		M	
Common Logical Node Information					
Mod	INC	Mode		M	
Beh	INS	Behavior		M	
Health	INS	Health		M	
NamePlt	LPL	Name plate		M	
Measured values					
PhV	WYE	Phase to ground voltage demands		O	In 4LN3, 3LN3 and 3BLN3 wiring modes
PPV	DEL	Phase to phase voltage demands		O	In 4LL3, 3LL3, 3BLL3, 3DIR2, 3OP2 and 3OP3 wiring modes
A	WYE	Phase and neutral current demands		O	(*) See WYE
TotkWImp	MV	Total active power imported block demand		E	
TotkWExp	MV	Total active power exported block demand		E	
TotkVarImp	MV	Total reactive power imported block demand		E	
TotkVarExp	MV	Total reactive power exported block demand		E	
TotVA	MV	Total apparent power demand		O	
AuxA	CMV	Auxiliary current I4 demand		E	

Sliding power demands MET1/demMMXU2

Attribute name	Attribute type	Explanation/Value	T	M/O/C/E	Comments
LNNName	Object name	demMMXU2		M	
Common Logical Node Information					
Mod	INC	Mode		M	
Beh	INS	Behavior		M	
Health	INS	Health		M	
NamePlt	LPL	Name plate		M	
Measured values					
TotkWImp	MV	Total active power imported sliding window demand		E	
TotkWExp	MV	Total active power exported sliding window demand		E	
TotkVarImp	MV	Total reactive power imported sliding window demand		E	
TotkVarExp	MV	Total reactive power exported sliding window demand		E	
TotVA	MV	Total apparent power sliding window demand		O	

Accumulated power demands MET1/demMMXU3

Attribute name	Attribute type	Explanation/Value	T	M/O/C/E	Comments
LNNName	Object name	demMMXU3		M	
Common Logical Node Information					
Mod	INC	Mode		M	
Beh	INS	Behavior		M	
Health	INS	Health		M	
NamePlt	LPL	Name plate		M	
Measured values					
TotkWImp	MV	Total active power imported accumulated demand		E	
TotkWExp	MV	Total active power exported accumulated demand		E	
TotkVarImp	MV	Total reactive power imported accumulated demand		E	
TotkVarExp	MV	Total reactive power exported accumulated demand		E	
TotVA	MV	Total apparent power accumulated demand		O	

Predicted power demands MET1/demMMXU4

Attribute name	Attribute type	Explanation/Value	T	M/O/C/E	Comments
LNNName	Object name	demMMXU4		M	
Common Logical Node Information					
Mod	INC	Mode		M	
Beh	INS	Behavior		M	
Health	INS	Health		M	
NamePlt	LPL	Name plate		M	
Measured values					
TotkWImp	MV	Total active power imported predicted demand		E	
TotkWExp	MV	Total active power exported predicted demand		E	
TotkVarImp	MV	Total reactive power imported predicted demand		E	
TotkVarExp	MV	Total reactive power exported predicted demand		E	
TotVA	MV	Total apparent power predicted demand		O	

Half-cycle measurements MET1/hcvMMXU1

Attribute name	Attribute type	Explanation/Value	T	M/O/C/E	Comments
LNNName	Object name	hcvMMXU1		M	
Common Logical Node Information					
Mod	INC	Mode		M	
Beh	INS	Behavior		M	
Health	INS	Health		M	
NamePlt	LPL	Name plate		M	
Measured values					
PhV	WYE	Phase to ground voltages		O	
PPV	DEL	Phase to phase voltages		O	
A	WYE	Phase and neutral currents		O	(*) See WYE
AuxA	CMV	Auxiliary current I4		E	

One-second measurements MET1/osvMMXU1

Attribute name	Attribute type	Explanation/Value	T	M/O/C/E	Comments
LNNName	Object name	osvMMXU1		M	
Common Logical Node Information					
Mod	INC	Mode		M	
Beh	INS	Behavior		M	
Health	INS	Health		M	
NamePlt	LPL	Name plate		M	
Measured values					
PhV	WYE	Phase to ground voltages		O	
PPV	DEL	Phase to phase voltages		O	
A	WYE	Phase and neutral currents		O	(*) See WYE
W	WYE	Phase active power		O	
VAr	WYE	Phase reactive power		O	
VA	WYE	Phase apparent power		O	
PF	WYE	Phase power factor		O	
TotW	MV	Total active power		O	
TotVAr	MV	Total reactive power		O	
TotVA	MV	Total apparent power		O	
TotPF	MV	Total power factor		O	
TotPFLag	MV	Total power factor lag		E	
TotPFLead	MV	Total power factor lead		E	
TotWImp	MV	Total active power imported		E	
TotWExp	MV	Total active power exported		E	
TotVarImp	MV	Total reactive power imported		E	
TotVarExp	MV	Total reactive power exported		E	
AuxA	CMV	Auxiliary current I4		E	
Hz	MV	Frequency		O	
Hz4c	MV	Frequency over 4 cycles		O	
AvPhV	MV	Average voltage phase to ground		E	
AvPPV	MV	Average voltage phase to phase		E	
AvA	MV	Average current		E	

Phasors MET1/phsrMMXU1

Attribute name	Attribute type	Explanation/Value	T	M/O/C/E	Comments
LNNName	Object name	phsrMMXU1		M	
Common Logical Node Information					
Mod	INC	Mode		M	
Beh	INS	Behavior		M	
Health	INS	Health		M	
NamePlt	LPL	Name plate		M	
Measured values					
PhV	WYE	Phase to ground voltages (magnitude and angle)		O	In 4LN3, 3LN3 and 3BLN3 wiring modes
PPV	DEL	Phase to phase voltages (magnitude and angle)		O	In 4LL3, 3LL3, 3BLL3, 3DIR2, 3OP2 and 3OP3 wiring modes
A	WYE	Phase currents (magnitude and angle)		O	
AuxA	CMV	Auxiliary current I4 (magnitude and angle)		E	

Half-cycle sequence and imbalance MET1/hcvMSQI1

Attribute name	Attribute type	Explanation/Value	T	M/O/C/E	Comments
LNNName	Object name	hcvMSQI1		M	
Common Logical Node Information					
Mod	INC	Mode		M	
Beh	INS	Behavior		M	
Health	INS	Health		M	
NamePlt	LPL	Name plate		M	
Measured values					
SeqV	SEQ	Zero sequence voltage		C	
SeqA	SEQ	Zero sequence current		C	
SeqExtA	SEQ	Zero sequence current, extended inputs Ix		E	
ImbNgV	MV	Imbalance negative sequence voltage		O	
ImbNgA	MV	Imbalance negative sequence current		O	
ImbNgExtA	MV	Imbalance negative sequence current, extended inputs Ix		E	

One-cycle imbalance MET1/ocvMSQI1

Attribute name	Attribute type	Explanation/Value	T	M/O/C/E	Comments
LNNName	Object name	ocvMSQI1		M	
Common Logical Node Information					
Mod	INC	Mode		M	
Beh	INS	Behavior		M	
Health	INS	Health		M	
NamePlt	LPL	Name plate		M	
Measured values					
ImbNgV	MV	Imbalance negative sequence voltage		O	
ImbNgA	MV	Imbalance negative sequence current		O	

Sequence components MET1/seqMSQI1

Attribute name	Attribute type	Explanation/Value	T	M/O/C/E	Comments
LNNName	Object name	seqMSQI1		M	
Common Logical Node Information					
Mod	INC	Mode		M	
Beh	INS	Behavior		M	
Health	INS	Health		M	
NamePlt	LPL	Name plate		M	
Measured values					
SeqV	SEQ	Positive, negative and zero sequence voltage		O	
ImbNgV	MV	Imbalance negative sequence voltage		O	
ImbZroV	MV	Imbalance zero sequence voltage		O	
SeqA	SEQ	Positive, negative and zero sequence current		O	
ImbNgA	MV	Imbalance negative sequence current		O	
ImbZroA	MV	Imbalance zero sequence current		O	

Minimum/maximum on any phase MET1/ocvMSTA1, MET1/osvMSTA1

Attribute name	Attribute type	Explanation/Value	T	M/O/C/E	Comments
LNName	Object name	ocvMSTA1 (one-cycle values), osvMSTA1 (one-second values)		M	
Common Logical Node Information					
Mod	INC	Mode		M	
Beh	INS	Behavior		M	
Health	INS	Health		M	
NamePlt	LPL	Name plate		M	
Measured values					
MinVolts	MV	Minimum voltage		O	
MinPPV	MV	Minimum voltage phase to phase		E	
MinAmps	MV	Minimum current		O	
MinW	MV	Minimum phase real power		O	
MinVAr	MV	Minimum phase reactive power		O	
MinVA	MV	Minimum phase apparent power		O	
MinPFLag	MV	Minimum phase PF lag		E	
MinPFLead	MV	Minimum phase PF lead		E	
MinThdPhV	MV	Minimum voltage THD phase to ground		E	
MinThdA	MV	Minimum current THD		E	
MinHKf	MV	Minimum K-Factor		E	
MinTddA	MV	Minimum current TDD		E	
MinIntThdPhV	MV	Minimum interharmonic voltage THD		E	
MinIntThdA	MV	Minimum interharmonic current THD		E	
MaxVolts	MV	Maximum voltage		O	
MaxPPV	MV	Maximum voltage phase to phase		E	
MaxAmps	MV	Maximum current		O	
MaxW	MV	Maximum phase real power		O	
MaxVAr	MV	Maximum phase reactive power		O	
MaxVA	MV	Maximum phase apparent power		O	
MaxPFLag	MV	Maximum phase PF lag		E	
MaxPFLead	MV	Maximum phase PF lead		E	
MaxThdPhV	MV	Maximum voltage THD phase to ground		E	
MaxThdA	MV	Maximum current THD		E	
MaxHKf	MV	Maximum K-Factor		E	
MaxTddA	MV	Maximum current TDD		E	
MaxIntThdPhV	MV	Maximum interharmonic voltage THD		E	
MaxIntThdA	MV	Maximum interharmonic current THD		E	

Chapter 4 PICS – Protocol Implementation Conformance Statement

This chapter contains the PICS conformance statement as defined by IEC 61850-8-1 that specifies mapping to MMS and to ISO/IEC 8802-3.

4.1 Profile conformance

A-Profile support

Profile	Profile description type	Client/ Subscriber	Server/ Publisher	Comments
A1	Client/server		Yes	
A2	GOOSE/GSE Management		Yes	SendGOOSEMessage only
A3	GSSE			
A4	Time sync	Yes		SNTP (RFC 2030, RFC 4330)

T-Profile support

Profile	Profile description type	Client/ Subscriber	Server/ Publisher	Comments
T1	TCP/IP profile		Yes	
T2	OSI T profile			
T3	GOOSE/GSE profile	Yes	Yes	
T4	GSSE T profile			
T5	Time sync profile	Yes		

4.2 MMS conformance

MMS service supported CBB (server)	M/O/C/I	Supported
status	M	Yes
getNameList	C	Yes
identify	M	Yes
rename	O	
read	C	Yes
write	C	Yes
getVariableAccessAttributes	C	Yes
defineNamedVariable	O	
defineScatteredAccess	I	
getScatteredAccessAttributes	I	
deleteVariableAccess	O	
defineNamedVariableList	O	
getNamedVariableListAttributes	C	
deleteNamedVariableList	C	
defineNamedTypet	I	
getNamedTypeAttributes	I	
deleteNamedType	I	
input	I	
output	I	
takeControl	I	
relinquishControl	I	
defineSemaphore	I	
deleteSemaphore	I	
reportPoolSemaphoreStatus	I	
reportSemaphoreStatus	I	
initiateDownloadSequence	I	
downloadSegment	I	
terminateDownloadSequence	I	
initiateUploadSequence	I	
uploadSegment	I	
terminateUploadSequence	I	
requestDomainDownload	I	

MMS service supported CBB (server)	M/O/C/I	Supported
requestDomainUpload	I	
loadDomainContent	I	
storeDomainContent	I	
deleteDomain	I	
getDomainAttributes	C	Yes
createProgramInvocation	I	
deleteProgramInvocation	I	
start	I	
stop	I	
resume	I	
reset	I	
kill	I	
getProgramInvocationAttributes	I	
obtainFile	C	
defineEventCondition	I	
deleteEventCondition	I	
getEventConditionAttributes	I	
reportEventConditionStatus	I	
alterEventConditionMonitoring	I	
triggerEvent	I	
defineEventAction	I	
deleteEventAction	I	
alterEventEnrollment	I	
reportEventEnrollmentStatus	I	
getEventEnrollmentAttributes	I	
acknowledgeEventNotification	I	
getAlarmSummary	I	
getAlarmEnrollmentSummary	I	
readJournal	C	
writeJournal	O	
initializeJournal	C	
reportJournalStatus	I	
createJournal	I	

MMS service supported CBB (server)	M/O/C/I	Supported
deleteJournal	I	
fileOpen	C	Yes
fileRead	C	Yes
fileClose	C	Yes
fileRename	I	
fileDelete	C	
fileDirectory	C	Yes
unsolicitedStatus	I	
informationReport	C	Yes
eventNotification	I	
attachToEventCondition	I	
attachToSemaphore	I	
conclude	M	Yes
cancel	M	Yes
getDataExchangeAttributes	NP	
exchangeData	NP	
defineAccessControlList	NP	
getAccessControlListAttributes	NP	
reportAccessControlledObjects	NP	
deleteAccessControlList	NP	
alterAccessControl	NP	
reconfigureProgramInvocation	NP	
M: mandatory support O: optional support C: conditional support I: out of scope NP: not present (MMS minor version 1 compatibility)		

4.3 GOOSE conformance statement (GOOSE Services)

Service	Subscriber	Publisher	Value/comments
SendGOOSEMessage		Yes	
GetGoReference			
GetGOOSEElementNumber			
GetGoCBValues	Yes	Yes	
SetGoCBValues	Yes	Yes	GoEna, DstAddress.addr, DstAddress.APPIID ConfRev - subscriber only
GSENotSupported			
GOOSE Control Block (GoCB)	Yes	Yes	

4.4 GSSE conformance statement (GSSE Services)

Service	Subscriber	Publisher	Value/comments
SendGSSEMessage			
GetGsReference			
GetGSSEDataOffset			
GetGsCBValues			
SetGsCBValues			
GSENotSupported			
GSSE Control Block (GsCB)			

4.5 SCL services (SCL conformance)

Service	M/O/C	Supported
SCL.1 SCL file implementation available (offline)	M	
SCL.2 SCL file available from implementation online	O	
SCL.3 SCL implementation reconfiguration supported online	O	

Chapter 5 PIXIT - Protocol Implementation Extra Information for Testing

This chapter describes device specific implementation of the protocol and communication capabilities of EM235/PM335/PM17X PRO.

5.1 Device configuration

The device configuration except of the listed items cannot be modified and is listed for information only.

5.2 ACSI models

Association model

Item	Value/Comments
Maximum simultaneous client associations	4
TCP Keepalive	120-600 s, configurable
Authentication	Not supported
Association parameters	
TSEL	0001, fixed value
SSEL	0001, fixed value
PSEL	00000001, fixed value
AP-Title	Not required, ignored if present
AE-Qualifier	Not required, ignored if present
Maximum MMS PDU size	16000
Typical startup time after a power supply interrupt	5 s

Server model

Item	Value/Comments
Quality bits for analog values (MX)	
Validity	Good
OutOfRange	Not supported
Failure	Not supported
Inconsistent	Not supported
Source	Process
Other quality bits and values	Not supported
Quality bits for status values (ST)	
Validity	Good
BadReference	Not supported
Failure	Not supported
Inconsistent	Not supported
Inaccurate	Not supported
Source	Process
Other quality bits and values	Not supported
Maximum number of data values in Get/SetDataValues requests	Limited only by the MMS PDU size

Setting group model

Item	Value/Comments
Number of setting groups	Not supported

Dataset model

Item	Value/Comments
Predefined Datasets in ICD file	Measurand data: MET1/LLN0\$DSet01Mx MET1/LLN0\$DSet02Mx MET1/LLN0\$DSet03Mx MET1/LLN0\$DSet04St MET1/LLN0\$DSet05Mx Status data: MET1/LLN0\$DSet01StInd MET1/LLN0\$DSet02StInd MET1/LLN0\$DSet03StInd MET1/LLN0\$DSet04StInd MET1/LLN0\$DSet04StSPCSO MET1/LLN0\$DSet05StSPCSO MET1/LLN0\$DSet06StSPCSO MET1/LLN0\$DSet07StSPCSO MET1/LLN0\$DSet08StInd MET1/LLN0\$DSet09StInd MET1/LLN0\$DSet09StFltNum GOOSE publisher data set: CTRL/LLN0\$DSetGOOSE1
Maximum number of data elements in one Dataset	64
Maximum number of persistent Datasets	17 predefined + 16 deletable

Predefined Dataset members

Data Set name	Members
MET1/LLN0\$DSet01Mx	MET1/LLN0\$osvMMXU1\$MX\$AvPhV MET1/LLN0\$osvMMXU1\$MX\$AvPPV MET1/LLN0\$osvMMXU1\$MX\$AvA MET1/LLN0\$osvMMXU1\$MX\$TotW MET1/LLN0\$osvMMXU1\$MX\$TotVAr MET1/LLN0\$osvMMXU1\$MX\$TotVA MET1/LLN0\$osvMMXU1\$MX\$TotPF MET1/LLN0\$osvMMXU1\$MX\$Hz MET1/LLN0\$osvMMXU1\$MX\$Hz4c
MET1/LLN0\$DSet02Mx	MET1/LLN0\$osvMMXU1\$MX\$PhV\$phsA MET1/LLN0\$osvMMXU1\$MX\$PhV\$phsB MET1/LLN0\$osvMMXU1\$MX\$PhV\$phsC MET1/LLN0\$osvMMXU1\$MX\$PPV\$phsAB MET1/LLN0\$osvMMXU1\$MX\$PPV\$phsBC MET1/LLN0\$osvMMXU1\$MX\$PPV\$phsCA MET1/LLN0\$osvMMXU1\$MX\$A\$phsA MET1/LLN0\$osvMMXU1\$MX\$A\$phsB MET1/LLN0\$osvMMXU1\$MX\$A\$phsC MET1/LLN0\$osvMMXU1\$MX\$A\$neut
MET1/LLN0\$DSet03Mx	MET1/LLN0\$osvMMXU1\$MX\$W\$phsA MET1/LLN0\$osvMMXU1\$MX\$W\$phsB MET1/LLN0\$osvMMXU1\$MX\$W\$phsC MET1/LLN0\$osvMMXU1\$MX\$VAr\$phsA MET1/LLN0\$osvMMXU1\$MX\$VAr\$phsB MET1/LLN0\$osvMMXU1\$MX\$VAr\$phsC MET1/LLN0\$osvMMXU1\$MX\$VA\$phsA MET1/LLN0\$osvMMXU1\$MX\$VA\$phsB MET1/LLN0\$osvMMXU1\$MX\$VA\$phsC MET1/LLN0\$osvMMXU1\$MX\$PF\$phsA MET1/LLN0\$osvMMXU1\$MX\$PF\$phsB MET1/LLN0\$osvMMXU1\$MX\$PF\$phsC
MET1/LLN0\$DSet04St	MET1/LLN0\$engMMTR1\$ST\$SupWh MET1/LLN0\$engMMTR1\$ST\$DmdWh MET1/LLN0\$engMMTR1\$ST\$SupVArh MET1/LLN0\$engMMTR1\$ST\$DmdVArh
MET1/LLN0\$DSet05Mx	MET1/LLN0\$osvMMXU1\$MX\$AuxA MET1/LLN0\$osvMMXU1\$MX\$AuxV MET1/LLN0\$osvMMXU1\$MX\$ExtA\$phsA MET1/LLN0\$osvMMXU1\$MX\$ExtA\$phsB MET1/LLN0\$osvMMXU1\$MX\$ExtA\$phsC MET1/LLN0\$osvMMXU1\$MX\$ExtAuxA MET1/LLN0\$osvMMXU1\$MX\$AvExtA

Data Set name	Members
MET1/LLN0\$DSet01StInd	MET1/LLN0\$biGGIO1\$ST\$Ind1 MET1/LLN0\$biGGIO1\$ST\$Ind2 ... MET1/LLN0\$biGGIO1\$ST\$Ind16 MET1/LLN0\$biGGIO2\$ST\$Ind1 MET1/LLN0\$biGGIO2\$ST\$Ind2 ... MET1/LLN0\$biGGIO2\$ST\$Ind16
MET1/LLN0\$DSet02StInd	MET1/LLN0\$biGGIO3\$ST\$Ind1 MET1/LLN0\$biGGIO3\$ST\$Ind2 ... MET1/LLN0\$biGGIO3\$ST\$Ind16 MET1/LLN0\$biGGIO4\$ST\$Ind1 MET1/LLN0\$biGGIO4\$ST\$Ind2 ... MET1/LLN0\$biGGIO4\$ST\$Ind16
MET1/LLN0\$DSet03StInd	MET1/LLN0\$biGGIO5\$ST\$Ind1 MET1/LLN0\$biGGIO5\$ST\$Ind2 ... MET1/LLN0\$biGGIO5\$ST\$Ind16 MET1/LLN0\$biGGIO6\$ST\$Ind1 MET1/LLN0\$biGGIO6\$ST\$Ind2 ... MET1/LLN0\$biGGIO6\$ST\$Ind16
MET1/LLN0\$DSet04StInd	MET1/LLN0\$biGGIO7\$ST\$Ind1 MET1/LLN0\$biGGIO7\$ST\$Ind2 ... MET1/LLN0\$biGGIO7\$ST\$Ind16 MET1/LLN0\$biGGIO8\$ST\$Ind1 MET1/LLN0\$biGGIO8\$ST\$Ind2 ... MET1/LLN0\$biGGIO8\$ST\$Ind16
MET1/LLN0\$DSet04StSPCSO	MET1/LLN0\$boGGIO1\$ST\$SPCSO1 MET1/LLN0\$boGGIO1\$ST\$SPCSO2 ... MET1/LLN0\$boGGIO1\$ST\$SPCSO8 MET1/LLN0\$boGGIO2\$ST\$SPCSO1 MET1/LLN0\$boGGIO2\$ST\$SPCSO2 ... MET1/LLN0\$boGGIO2\$ST\$SPCSO8

Data Set name	Members
MET1/LLN0\$DSet05StSPCSO	MET1/LLN0\$boGGIO3\$ST\$SPCSO1 MET1/LLN0\$boGGIO3\$ST\$SPCSO2 ... MET1/LLN0\$boGGIO3\$ST\$SPCSO8 MET1/LLN0\$boGGIO4\$ST\$SPCSO1 MET1/LLN0\$boGGIO4\$ST\$SPCSO2 ... MET1/LLN0\$boGGIO4\$ST\$SPCSO8
MET1/LLN0\$DSet06StSPCSO	MET1/LLN0\$boGGIO5\$ST\$SPCSO1 MET1/LLN0\$boGGIO5\$ST\$SPCSO2 ... MET1/LLN0\$boGGIO5\$ST\$SPCSO8 MET1/LLN0\$boGGIO6\$ST\$SPCSO1 MET1/LLN0\$boGGIO6\$ST\$SPCSO2 ... MET1/LLN0\$boGGIO6\$ST\$SPCSO8
MET1/LLN0\$DSet07StSPCSO	MET1/LLN0\$boGGIO7\$ST\$SPCSO1 MET1/LLN0\$boGGIO7\$ST\$SPCSO2 ... MET1/LLN0\$boGGIO7\$ST\$SPCSO8 MET1/LLN0\$boGGIO8\$ST\$SPCSO1 MET1/LLN0\$boGGIO8\$ST\$SPCSO2 ... MET1/LLN0\$boGGIO8\$ST\$SPCSO8
MET1/LLN0\$DSet08StInd	MET1/LLN0\$spGGIO1\$ST\$Ind1 MET1/LLN0\$spGGIO1\$ST\$Ind2 ... MET1/LLN0\$spGGIO1\$ST\$Ind32
MET1/LLN0\$DSet09StInd	MET1/LLN0\$spGGIO2\$ST\$Ind1 MET1/LLN0\$spGGIO2\$ST\$Ind2 ... MET1/LLN0\$spGGIO2\$ST\$Ind32
MET1/LLN0\$DSet09StFitNum	MET1/LLN0\$drRDRE1\$ST\$FitNum MET1/LLN0\$drRDRE2\$ST\$FitNum ... MET1/LLN0\$drRDRE8\$ST\$FitNum
CTRL/LLN0\$DSetGOOSE1	MET1/osvMMXU1\$MX\$PhV\$phsA\$cVal MET1/osvMMXU1\$MX\$PhV\$phsA\$q MET1/osvMMXU1\$MX\$PhV\$phsB\$cVal MET1/osvMMXU1\$MX\$PhV\$phsB\$q MET1/osvMMXU1\$MX\$PhV\$phsC\$cVal MET1/osvMMXU1\$MX\$PhV\$phsC\$q

Reporting model

Item	Value/Comments
<p>Predefined RCBs in the ICD file (See Section 6.2 on configuring the number of RCB instances)</p>	<p>Number of RCB instances = 1 (non-indexed RCBs)</p> <p>16 URCBs:</p> <p>CTRL/LLN0\$RP\$URep01 CTRL/LLN0\$RP\$URep02 CTRL/LLN0\$RP\$URep03 CTRL/LLN0\$RP\$URep04 CTRL/LLN0\$RP\$URep05 CTRL/LLN0\$RP\$URep06 CTRL/LLN0\$RP\$URep07 CTRL/LLN0\$RP\$URep08 MET1/LLN0\$RP\$URep01 MET1/LLN0\$RP\$URep02 MET1/LLN0\$RP\$URep03 MET1/LLN0\$RP\$URep04 MET1/LLN0\$RP\$URep05 MET1/LLN0\$RP\$URep06 MET1/LLN0\$RP\$URep07 MET1/LLN0\$RP\$URep08</p> <p>16 BRCBs:</p> <p>CTRL/LLN0\$BR\$BRep01 CTRL/LLN0\$BR\$BRep02 CTRL/LLN0\$BR\$BRep03 CTRL/LLN0\$BR\$BRep04 CTRL/LLN0\$BR\$BRep05 CTRL/LLN0\$BR\$BRep06 CTRL/LLN0\$BR\$BRep07 CTRL/LLN0\$BR\$BRep08 MET1/LLN0\$BR\$BRep01 MET1/LLN0\$BR\$BRep02 MET1/LLN0\$BR\$BRep03 MET1/LLN0\$BR\$BRep04 MET1/LLN0\$BR\$BRep05 MET1/LLN0\$BR\$BRep06 MET1/LLN0\$BR\$BRep07 MET1/LLN0\$BR\$BRep08</p> <p>Number of RCB instances = 1 (indexed RCBs, RptEnabled max=1)</p> <p>16 URCBs:</p> <p>CTRL/LLN0\$RP\$URepA01 CTRL/LLN0\$RP\$URepB01 CTRL/LLN0\$RP\$URepC01 CTRL/LLN0\$RP\$URepD01 CTRL/LLN0\$RP\$URepE01</p>

Item	Value/Comments
	<p>CTRL/LLN0\$RP\$URepF01 CTRL/LLN0\$RP\$URepG01 CTRL/LLN0\$RP\$URepH01 MET1/LLN0\$RP\$URepA01 MET1/LLN0\$RP\$URepB01 MET1/LLN0\$RP\$URepC01 MET1/LLN0\$RP\$URepD01 MET1/LLN0\$RP\$URepE01 MET1/LLN0\$RP\$URepF01 MET1/LLN0\$RP\$URepG01 MET1/LLN0\$RP\$URepH01</p> <p>16 BRCBs: CTRL/LLN0\$BR\$BRepA01 CTRL/LLN0\$BR\$BRepB01 CTRL/LLN0\$BR\$BRepC01 CTRL/LLN0\$BR\$BRepD01 CTRL/LLN0\$BR\$BRepE01 CTRL/LLN0\$BR\$BRepF01 CTRL/LLN0\$BR\$BRepG01 CTRL/LLN0\$BR\$BRepH01 MET1/LLN0\$BR\$BRepA01 MET1/LLN0\$BR\$BRepB01 MET1/LLN0\$BR\$BRepC01 MET1/LLN0\$BR\$BRepD01 MET1/LLN0\$BR\$BRepE01 MET1/LLN0\$BR\$BRepF01 MET1/LLN0\$BR\$BRepG01 MET1/LLN0\$BR\$BRepH01</p> <p>Number of RCB instances = 2 (indexed RCBs, RptEnabled max=2)</p> <p>8 URCBs x 2 clients: CTRL/LLN0\$RP\$URepA01 CTRL/LLN0\$RP\$URepA02 CTRL/LLN0\$RP\$URepB01 CTRL/LLN0\$RP\$URepB02 CTRL/LLN0\$RP\$URepC01 CTRL/LLN0\$RP\$URepC02 CTRL/LLN0\$RP\$URepD01 CTRL/LLN0\$RP\$URepD02 MET1/LLN0\$RP\$URepA01 MET1/LLN0\$RP\$URepA02 MET1/LLN0\$RP\$URepB01 MET1/LLN0\$RP\$URepB02 MET1/LLN0\$RP\$URepC01</p>

Item	Value/Comments
	<p>MET1/LLN0\$RP\$URepC02 MET1/LLN0\$RP\$URepD01 MET1/LLN0\$RP\$URepD02</p> <p>8 BRCBs x 2 clients:</p> <p>CTRL/LLN0\$BR\$BRepA01 CTRL/LLN0\$BR\$BRepA02 CTRL/LLN0\$BR\$BRepB01 CTRL/LLN0\$BR\$BRepB02 CTRL/LLN0\$BR\$BRepC01 CTRL/LLN0\$BR\$BRepC02 CTRL/LLN0\$BR\$BRepD01 CTRL/LLN0\$BR\$BRepD02</p> <p>MET1/LLN0\$BR\$BRepA01 MET1/LLN0\$BR\$BRepA02 MET1/LLN0\$BR\$BRepB01 MET1/LLN0\$BR\$BRepB02 MET1/LLN0\$BR\$BRepC01 MET1/LLN0\$BR\$BRepC02 MET1/LLN0\$BR\$BRepD01 MET1/LLN0\$BR\$BRepD02</p> <p>Number of RCB instances = 4 (indexed RCBs, RptEnabled max=4)</p> <p>4 URCBs x 4 clients:</p> <p>CTRL/LLN0\$RP\$URepA01 CTRL/LLN0\$RP\$URepA02 CTRL/LLN0\$RP\$URepA03 CTRL/LLN0\$RP\$URepA04 CTRL/LLN0\$RP\$URepB01 CTRL/LLN0\$RP\$URepB02 CTRL/LLN0\$RP\$URepB03 CTRL/LLN0\$RP\$URepB04 MET1/LLN0\$RP\$URepA01 MET1/LLN0\$RP\$URepA02 MET1/LLN0\$RP\$URepA03 MET1/LLN0\$RP\$URepA04 MET1/LLN0\$RP\$URepB01 MET1/LLN0\$RP\$URepB02 MET1/LLN0\$RP\$URepB03 MET1/LLN0\$RP\$URepB04</p> <p>4 BRCBs x 4 clients:</p> <p>CTRL/LLN0\$BR\$BRepA01 CTRL/LLN0\$BR\$BRepA02 CTRL/LLN0\$BR\$BRepA03 CTRL/LLN0\$BR\$BRepA04</p>

Item	Value/Comments
	CTRL/LLN0\$BR\$BRepB01 CTRL/LLN0\$BR\$BRepB02 CTRL/LLN0\$BR\$BRepB03 CTRL/LLN0\$BR\$BRepB04 MET1/LLN0\$BR\$BRepA01 MET1/LLN0\$BR\$BRepA02 MET1/LLN0\$BR\$BRepA03 MET1/LLN0\$BR\$BRepA04 MET1/LLN0\$BR\$BRepB01 MET1/LLN0\$BR\$BRepB02 MET1/LLN0\$BR\$BRepB03 MET1/LLN0\$BR\$BRepB04
Support of trigger conditions	
Integrity	Supported
Data change	Supported
Data update	Can be set, but there is no process data to report for this condition
Quality change	Can be set, but there is no process data to report for this condition
General interrogation	Supported
Support of optional fields	
Sequence number	Supported, default = TRUE
Report time-stamp	Supported, default = TRUE
Reason for inclusion	Supported, default = TRUE
Dataset name	Supported, default = TRUE
Data reference	Supported, default = TRUE
Buffer overflow	Supported, default = FALSE
EntryID	Supported, default = FALSE
Conf-rev	Supported, default = FALSE
Segmentation	Not supported
Sending of segmented reports	Not supported
EntryID	Only the first 4 octets are used. Remaining octets must be 0.
Buffer size	5000 octets for each BRCB

Report Control Blocks predefined attribute values

RptID	Datset	OptFlds	BufTm	TrgOps
CTRL/LLN0\$RP\$URep01	Not defined	0x7C, 0x00	0	0x60
CTRL/LLN0\$RP\$URep02	Not defined	0x7C, 0x00	0	0x60
CTRL/LLN0\$RP\$URep03	Not defined	0x7C, 0x00	0	0x60
CTRL/LLN0\$RP\$URep04	Not defined	0x7C, 0x00	0	0x60
CTRL/LLN0\$RP\$URep05	Not defined	0x7C, 0x00	0	0x60
CTRL/LLN0\$RP\$URep06	Not defined	0x7C, 0x00	0	0x60
CTRL/LLN0\$RP\$URep07	Not defined	0x7C, 0x00	0	0x60
CTRL/LLN0\$RP\$URep08	Not defined	0x7C, 0x00	0	0x60
CTRL/LLN0\$BR\$BRep01	Not defined	0x7C, 0x00	0	0x60
CTRL/LLN0\$BR\$BRep02	Not defined	0x7C, 0x00	0	0x60
CTRL/LLN0\$BR\$BRep03	Not defined	0x7C, 0x00	0	0x60
CTRL/LLN0\$BR\$BRep04	Not defined	0x7C, 0x00	0	0x60
CTRL/LLN0\$BR\$BRep05	Not defined	0x7C, 0x00	0	0x60
CTRL/LLN0\$BR\$BRep06	Not defined	0x7C, 0x00	0	0x60
CTRL/LLN0\$BR\$BRep07	Not defined	0x7C, 0x00	0	0x60
CTRL/LLN0\$BR\$BRep08	Not defined	0x7C, 0x00	0	0x60
MET1/LLN0\$RP\$URep01	MET1/LLN0\$DSet01Mx	0x7C, 0x00	0	0x60
MET1/LLN0\$RP\$URep02	MET1/LLN0\$DSet02Mx	0x7C, 0x00	0	0x60
MET1/LLN0\$RP\$URep03	MET1/LLN0\$DSet03Mx	0x7C, 0x00	0	0x60
MET1/LLN0\$RP\$URep04	MET1/LLN0\$DSet05Mx	0x7C, 0x00	0	0x60
MET1/LLN0\$RP\$URep05	Not defined	0x7C, 0x00	0	0x60
MET1/LLN0\$RP\$URep06	Not defined	0x7C, 0x00	0	0x60
MET1/LLN0\$RP\$URep07	Not defined	0x7C, 0x00	0	0x60
MET1/LLN0\$RP\$URep08	Not defined	0x7C, 0x00	0	0x60
MET1/LLN0\$BR\$BRep01	Not defined	0x7C, 0x00	0	0x60
MET1/LLN0\$BR\$BRep02	Not defined	0x7C, 0x00	0	0x60
MET1/LLN0\$BR\$BRep03	Not defined	0x7C, 0x00	0	0x60
MET1/LLN0\$BR\$BRep04	Not defined	0x7C, 0x00	0	0x60
MET1/LLN0\$BR\$BRep05	Not defined	0x7C, 0x00	0	0x60
MET1/LLN0\$BR\$BRep06	MET1/LLN0\$DSet08StInd	0x7C, 0x00	0	0x60
MET1/LLN0\$BR\$BRep07	MET1/LLN0\$DSet09StFitNum	0x7C, 0x00	0	0x60
MET1/LLN0\$BR\$BRep08	Not defined	0x7C, 0x00	0	0x60

Report service information

Any predefined RCB attribute value may be written when RptEna is FALSE. Only existing data sets (see Dataset model table) may be used for DataSet attribute changing. Internal events, caused by data-change and quality-change trigger options only, result in immediate sending of reports or buffering events for transmission (limited by a buffer size of 1000 bytes per report).

Control model

Item	Value/Comments
Control models supported	
Status only	Supported
Direct with normal security	Not supported
Direct with enhanced security	Not supported
SBO with normal security	Supported for GGIO class nodes
SBO with enhanced security	Not supported
Time activated operate (operTm)	Not supported
Test mode	Not supported
Check conditions	Not supported
Operate many	Not supported
Pulse configuration	Not supported
Service error types:	
instance-not-available	Not supported
access-violation	Supported
parameter-value-inappropriate	Not supported
instance-locked-by-another-client	Not supported
failed-due-to-server-constraint	Not supported
generic-error	Not supported

GOOSE Publisher model

Item	Value/Comments
Maximum number of supported GOOSE data sets	1 (fixed)
Maximum data change detection delay	8 ms @ 60Hz/10 ms @ 50Hz
Initial retransmission interval	8 ms @ 60Hz/10 ms @ 50Hz for the first 5 messages
Maximum retransmission interval	Configurable from 0.5 s to 60 s
Publisher retransmission strategy	Geometric with a time multiplier of 2 after the 5th message
Declared message timeAllowedToLive time	Twice the message retransmission interval + 10 ms

GOOSE Subscriber model

Item	Value/Comments
Maximum number of GOOSE subscriptions	20
Maximum number of GOOSE data set items	16 per subscription
Supported types of GOOSE data set items	Bstring32, Bstring16, Bstring8, FLOAT32, INT32, INT16, INT8, BOOLEAN, Dbpos
Mapping external GOOSE data set objects to internal variables	External indication: - 128 variables of BOOLEAN (ExtInd1... ExtInd128) External measured values: - 32 variables of INT32 (ExtiVal1 – ExtiVal32) - 32 variable of FLOAT32 (ExtfVal1 – ExtfVal32)
Filters used to identify subscribed GOOSE messages	Destination MAC address, ETHERTYPE, APPID.
Subscriber behavior in case of mismatching GOOSE header parameters (confRev, numDatSetEntries)	All expected data objects are invalidated and zeroed.
Subscriber behavior in case of missing a GOOSE message within the timeAllowedToLive time	All expected data objects are invalidated and zeroed.

Time and time synchronization model

Item	Value/Comments
Time synchronization sources	SNTP
Time quality bits	
LeapSecondsKnown	Supported
ClockFailure	Supported
ClockNotSynchronized	Supported
Meaning of ClockFailure bit	The bit is set when the device clock is reset as a result of losing backup battery power. The bit is cleared when the device clock is updated from any external time source or via communications.
Meaning of ClockNotSynchronized bit	The bit is set in the event of using unsynchronized internal clock for time stamping in the following cases: a) if none of the external time sources is selected for time synchronization b) if no valid time synchronization message arrives in 10 minutes after the expected time from either a SNTP server, or from the IRIG-B time code input
Number of SNTP servers supported	2
SNTP polling interval	Programmable, 60 to 86400 seconds
Allowable SNTP server response time	10 seconds
Number of SNTP connection retries for each server	Up to 3 retries in 1 minute intervals
Failed SNTP server reconnection time	10 minutes

File transfer model

Item	Value/Comments
Maximum length of names (incl. path)	64
Separator for file and directories path	'\'
Maximum number of directory entries	10 per recorder (the last 10 events recorded, starting from the newest record)
Structure of directories	COMTRADE\filename
Filename structure	drRDRE<1...8>\${fault number}\${trigger event ID}.cfg drRDRE<1...8>\${fault number}\${trigger event ID}.dat

5.3 Impact of the device settings

Logical device mode

Logical device mode given by LLN0.Mod is always ON.

Controls

The Loc attribute in logical nodes containing controls indicates the complementary status of the internal BOOLEAN variable REMOTE MODE defaulted to FALSE. It is controlled via a setpoint logic equation that should normally check the status of an external Local/Remote switch. Control commands addressed to the CSWI switch controller nodes and to the boGGIO general binary output nodes will be rejected with AddCause=2 Blocked-by-switching-hierarchy until REMOTE MODE is set to TRUE via a logic equation.

EM235/PM335 PRO can provide additional protection for control nodes based on client IP addresses by enabling control commands for specific clients and disabling or conditional blocking via logic equations for others. Commands received from a blocked client port are rejected with AddCause=2 Blocked-by-switching-hierarchy.

Measurement units

Voltage, current and power units are selectable (see Section 6.2 for details).

Measurement type	Units (precision)	
	PT = 1	PT > 1
Current	A/kA (0.01 A)	A/kA (0.01 A)
Voltage AC	V/kV (0.1 V)	V/kV (1 V)
Power	kW, kVA, kvar or MW, Mvar, MVA (0.001 kW/kVA/kvar)	kW, kVA, kvar or MW, Mvar, MVA (1 kW/kVA/kvar)
Energy	0.001/0.01/0.1/1 kWh, kVAh, kvarh	0.001/0.01/0.1/1 kWh, kVAh, kvarh

Process Measurement Limits

Measurement type	Measurement limits		
	Condition	min	max
Current (standard inputs)		0	Current Scale × CT Ratio ^{1, 2} (Imax)
Auxiliary current I4 (standard input)		0	Current Scale × I4 CT Ratio ^{1, 2}
Current (extended inputs)		0	20 × CT Primary current
Auxiliary current I4x (extended input)		0	20 × I4 CT Primary current
Voltage AC		0	Voltage Scale × PT Ratio ³ (Vmax)
Auxiliary voltage V4		0	Voltage Scale × V4 PT Ratio ³
Power signed (kW, kvar)		-Vmax × Imax × 2/1000	Vmax × Imax × 2/1000 ⁴
Power unsigned (kVA, kW import/export, kvar import/export) and power demands		0	Vmax × Imax × 2/1000 ⁴
Power factor signed		-1.000	1.000
Power factor unsigned (lag, lead)		0	1.000
Analog inputs	+/-1mA	-AI full scale × 2	AI full scale × 2
	0-20mA	AI zero scale	AI full scale
	4-20mA	AI zero scale	AI full scale
	0-1mA	AI zero scale	AI full scale
	0-50mA	AI zero scale	AI full scale × 2
	+/-10V	-AI full scale	AI full scale
Unbalance		0	300.0
THD		0	999.9
TDD		0	999.9
K-Factor		1.0	999.9
Harmonics		0	100.00

NOTES:

1. CT Ratio = CT primary current/CT secondary current.
2. The default Current Scale is 4 × CT secondary current for devices with a 400% overload (ANSI) or 2 × CT secondary current for devices with a 200% overload (IEC). It can be changed via the Device Options setup in PAS.
3. The default Voltage Scale is 828V. It can be changed via the Device Options setup in PAS.
4. If PT Ratio = 1.0 and Pmax is greater than 9,999 kW, then it is truncated to 9,999 kW.

Deadbands

The db value represents the percentage of difference between max and min process measurement limits indicated in the table above. The default db (deadband) attribute values in functional constraint CF are defined in the ICD file. They can be changed to provide reasonable conditions for generating reportable events.

Textual descriptions

The default d (textual description of the data) attribute values in functional constraint DC are defined in the device. They can be changed for descriptions of measured/metered and status data.

Chapter 6 Configuring IEC 61850

The PAS software supplied with EM235/PM335/PM17X PRO provides a configuration tool for customizing your device and generating a configured IED description (CID) file for use with IEC 61850 client applications. See EM235/PM335/PM17X PRO Operation Manual for more information on installation and operating PAS on your computer.

To reset the IEC 61850 settings to the factory defaults:

1. Select Administration->Master Reset from the Monitor menu.
2. Click the “Reset IEC 61850 Configuration” button, and then confirm the command.

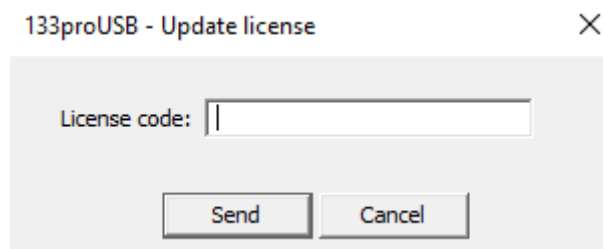
6.1 Licensing IEC 61850

A valid license key must be provided in EM235/PM335/PM17X PRO for IEC 61850 communications. The device is normally shipped with a temporary license, which is valid for a 30-day operation and then can be extended for an additional month.

A permanent license can be obtained from your local distributor for an additional fee. A device serial number must be provided in the license request. The device may also be shipped with the permanent license in the event of a pre-paid fee.

To program a license key in you device:

1. Select Administration->Update License from the Monitor menu.



2. Type in the license code and click Send.

6.2 Configuring IED Properties

The IEC 61850 configurator allows you to configure the IED name, device location, measurement units and communication options, and to arrange a set of report control blocks for multi-client installations

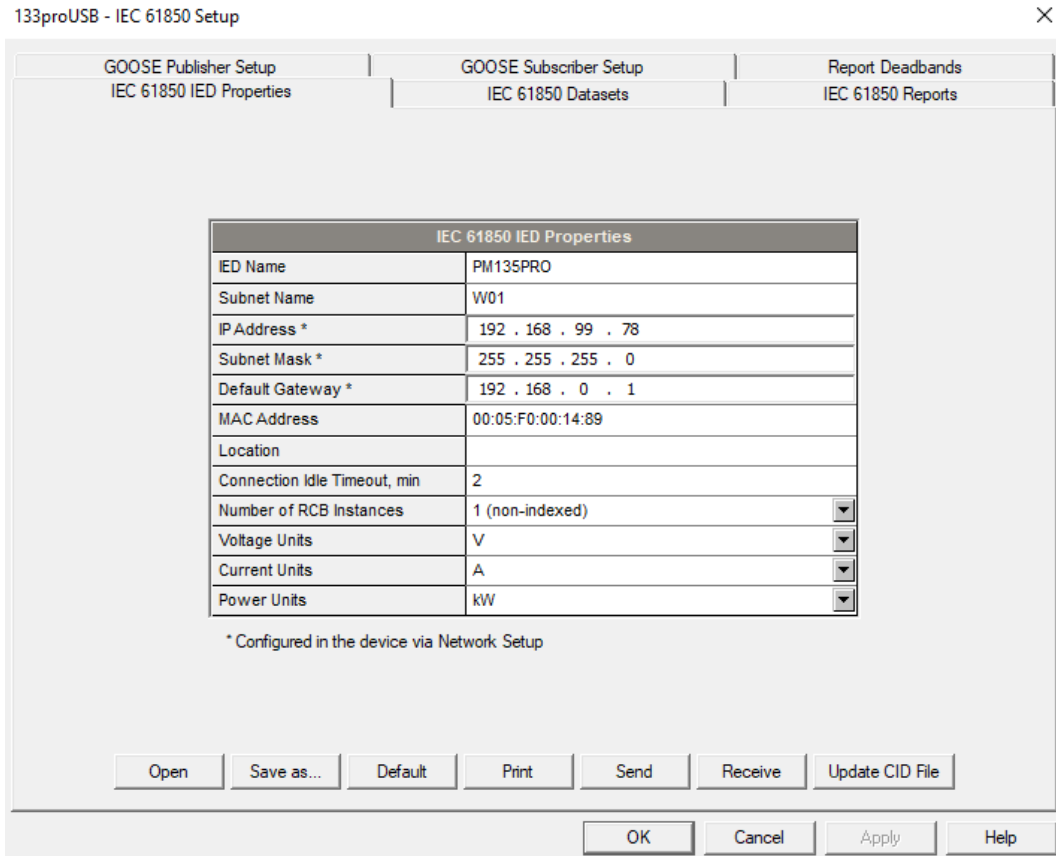
To configure the IED properties in your device:

1. Select IEC 61850 Setup from the Meter Setup menu, and then click on the IEC 61850 IED Properties tab.
2. Configure IED options for your application as required.

NOTES

- The configured IED name accompanies logical device names in object references.
- The device location also identifies the substation location in COMTRADE configuration files as the station_name attribute.
- Attributes marked with the asterisk cannot be changed in the device via this setup but you can define and store them to the device database when working offline to use for updating a device CID file.
- The number of RCB instances defines how pre-defined RCBs are arranged in the device for use in multi-client applications. The RCBs are automatically pre-configured in the device in the way indicated in Section “Reporting model”. The RCB names and report IDs are set to defaults as the number of RCB instances changes. If you intend to change the default setting, set it first before configuring report control blocks.

3. Send your setup to the device and save it to the device database.



6.3 Configuring Datasets

To review or configure the IEC 61850 datasets:

1. Select IEC 61850 Setup from the Meter Setup menu, and then click on the IEC 61850 Datasets tab.
2. Select a dataset you wish to view or configure in the “Dataset Reference” box. Select “New Dataset” to create a new dataset.
3. To delete dataset members, uncheck the appropriate “Included” boxes. Uncheck all dataset members to delete the entire dataset.
4. To add or change dataset members, click “Edit from file”, locate the PM13xPRO REV2.icd template file or a CID file you generated for your device, and click Open.

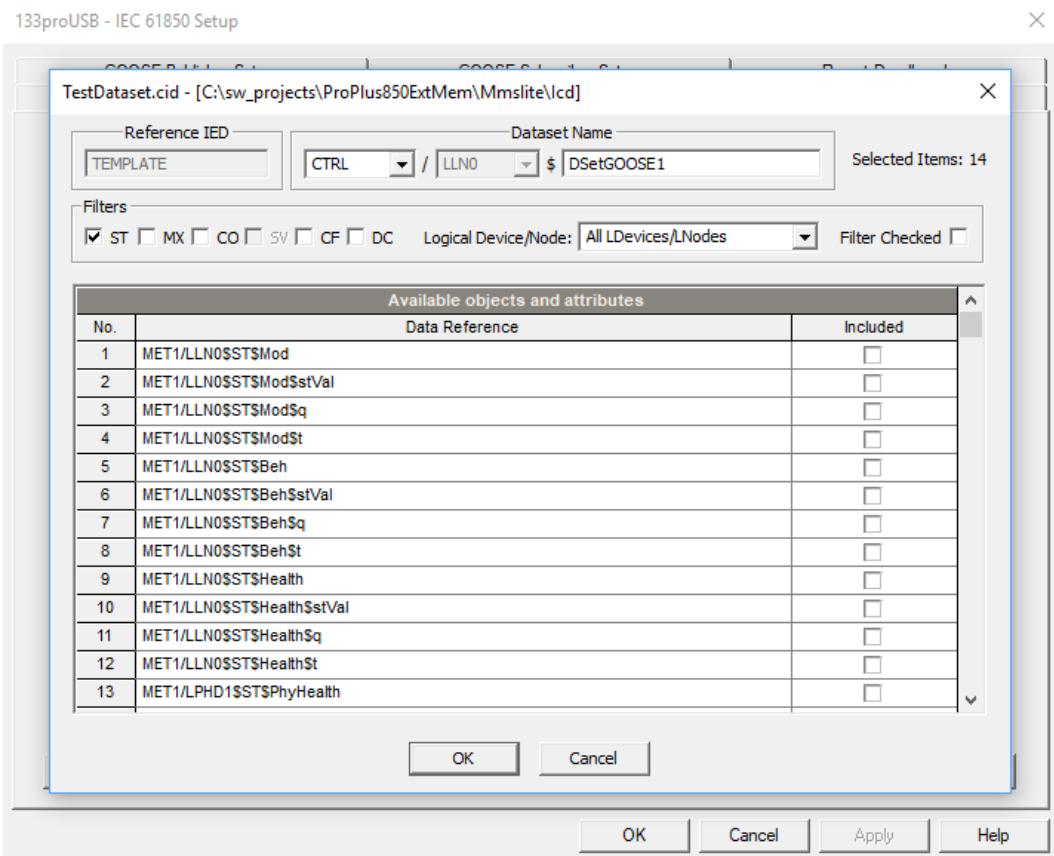
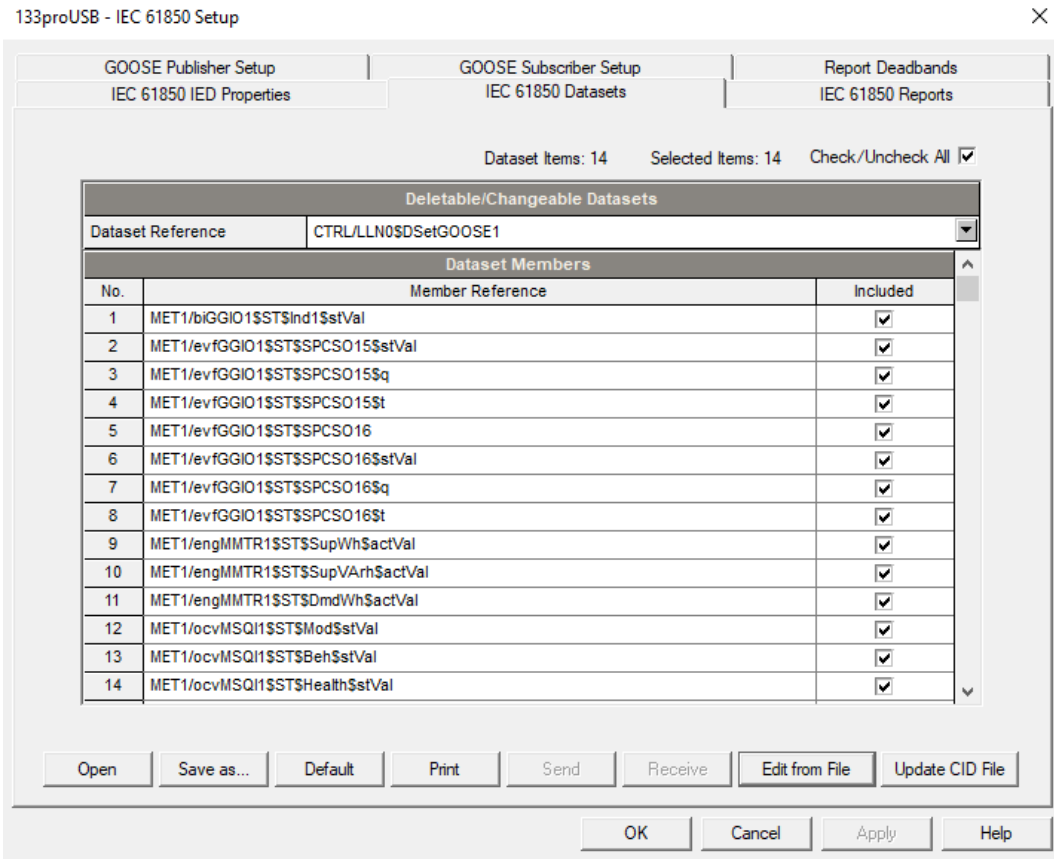
A full list of the available data objects and data attributed is displayed, where included dataset members are checked.

To create a new dataset, select a logical device where the dataset will be located and type a dataset name in the “Dataset Name” box.

Check the “Included” boxes for items you wish to be members of the dataset and click OK.

To make easy selection of items across the list, use filters - functional constraints or/and a selected logical device/logical node. Click “Filter checked” to see and revise a list of the selected items.

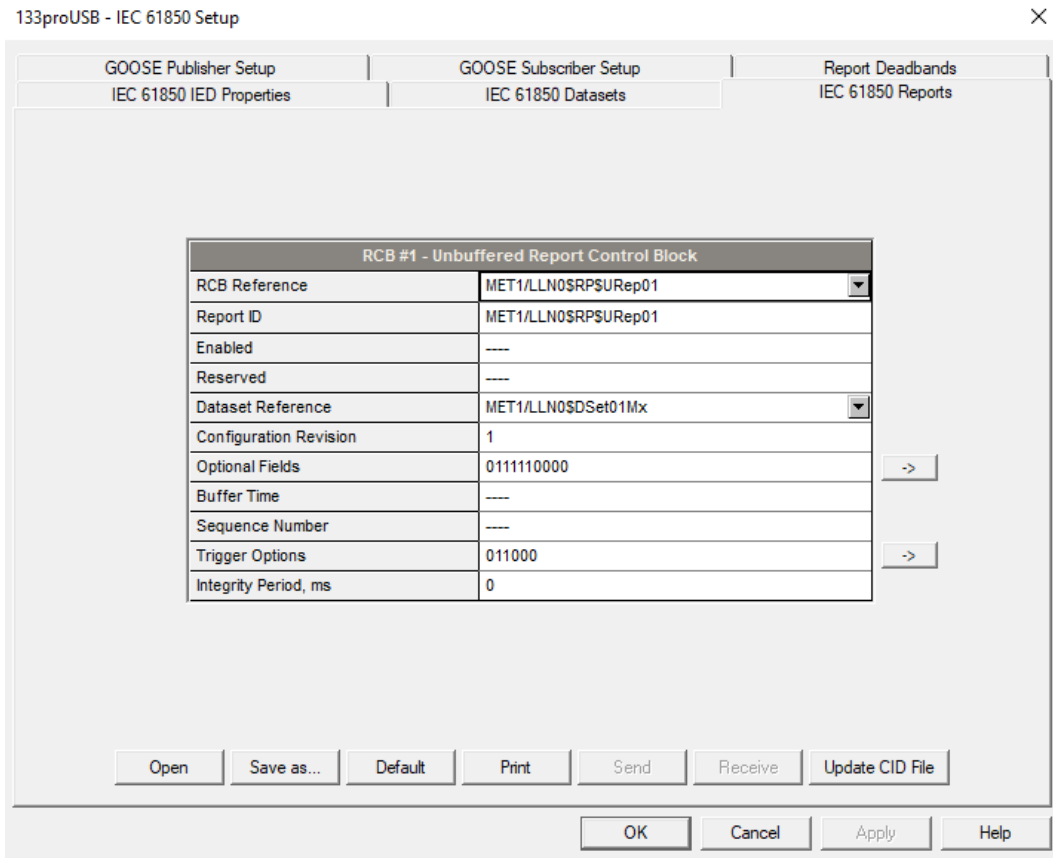
5. Send your new setup to the device and save it to the device database.



6.4 Configuring Report Control Blocks

To configure Report Control Blocks in your device:

1. Select IEC 61850 Setup from the Meter Setup menu, and then click on the IEC 61850 Reports tab.



2. Select an RCB you wish to view or configure in the “RCB Reference” box.
3. Configure the RCB attributes as required for your application. The following items can be configured:
 - Report ID
 - Dataset reference (can be selected from the available datasets list)
 - Optional fields
 - Trigger options
 - Integrity period for periodic reports with the integrity trigger option selected

To change the Optional fields or Trigger options, click the arrow button at the right to the item, check the appropriate options and click OK.

NOTE

Configure your new and customized datasets and update them in the device, or save to the device database if you work offline, before configuring reports; otherwise you may get an incomplete dataset list.

4. Send your new setup to the device and save it to the device database.

6.5 Configuring the GOOSE Publisher

EM235/PM335/PM17X PRO GOOSE publisher provides the dedicated dataset CTRL/LLN0\$DSetGOOSE1 for GOOSE communications. The default dataset variables list can be modified via the IEC 61850 Datasets setup (see Section 6.3).

To configure the GOOSE publisher:

1. Select IEC 61850 Setup from the Meter Setup menu, and then click on the GOOSE Publisher Setup tab.
2. Configure the destination MAC address, application ID and the maximum message retransmission interval as required for your application. Other setup attributes are not changeable and are indicated for information only.
3. Select Yes in the Publisher Enabled box to enable publisher operation.
4. Send your setup to the device.

133proUSB - IEC 61850 Setup ×

IEC 61850 IED Properties		IEC 61850 Datasets		IEC 61850 Reports	
GOOSE Publisher Setup		GOOSE Subscriber Setup		Report Deadbands	
GOOSE Publisher					
GOOSE CB Reference	CTRL/LLN0\$GO\$GoCBPub1				
Publisher Enabled	NO ▼				
GOOSE ID	Pub1				
Dataset Reference	CTRL/LLN0\$DSetGOOSE1				
Configuration Revision	1				
Needs Commissioning	NO				
Destination MAC Address	01:0C:CD:01:01:FF				
Priority	4				
VLAN ID	0				
Applicaton ID	3001				
Max. Retransmission Interval, ms	500				

6.6 Configuring the GOOSE Subscriber

EM235/PM335/PM17X PRO can be subscribed to messages sent by any GOOSE network device including both EM235/PM335/PM17X PRO and non-SATEC devices.

The GOOSE subscriber supports up to 20 subscriptions with up to 16 data elements in each subscription. The location of the subscribed elements in GOOSE data sets and mapping to EM235/PM335/PM17X PRO internal variables are configurable. The subscription elements are selected from a publishing device's ICD/CID file.

EM235/PM335 PRO provides a set of internal variables for mapping external GOOSE data:

- a 128-bit binary string composed of 128 binary variables ExtInd1...ExtInd128 of type BOOLEAN called external indication and intended for mapping single-point BOOLEAN and integer elements and double-point Dbpos data;
- 32 variables ExtiVal1...ExtiVal32 of type INT32 for mapping signed and unsigned integer numbers of any size;
- 32 variables ExtfVal1...ExtfVal32 of type FLOAT32 for mapping single-precision floating point numbers.

When the subscriber receives GOOSE message updates, the subscribed data is copied to the internal variables that can be monitored and recorded in the device like any other measured value. When the subscriber does not receive updates, or the declared message live time has expired, or the data set differs from the subscriber setup, the internal variables are zeroed and the non-active status is indicated in the subscription status.

The subscription status can be monitored from an IEC 61850 client via the GOOSE subscriber logical nodes CTRL/sbsLGOS1-CTRL/sbsLGOS20, or from a Modbus client application via the GOOSE subscriber status register (see EM235/PM335/PM17X PRO Modbus Reference Guide for the register location).

To configure the GOOSE subscriber:

1. Select IEC 61850 Setup from the Meter Setup menu, and then click on the GOOSE Subscriber Setup tab.

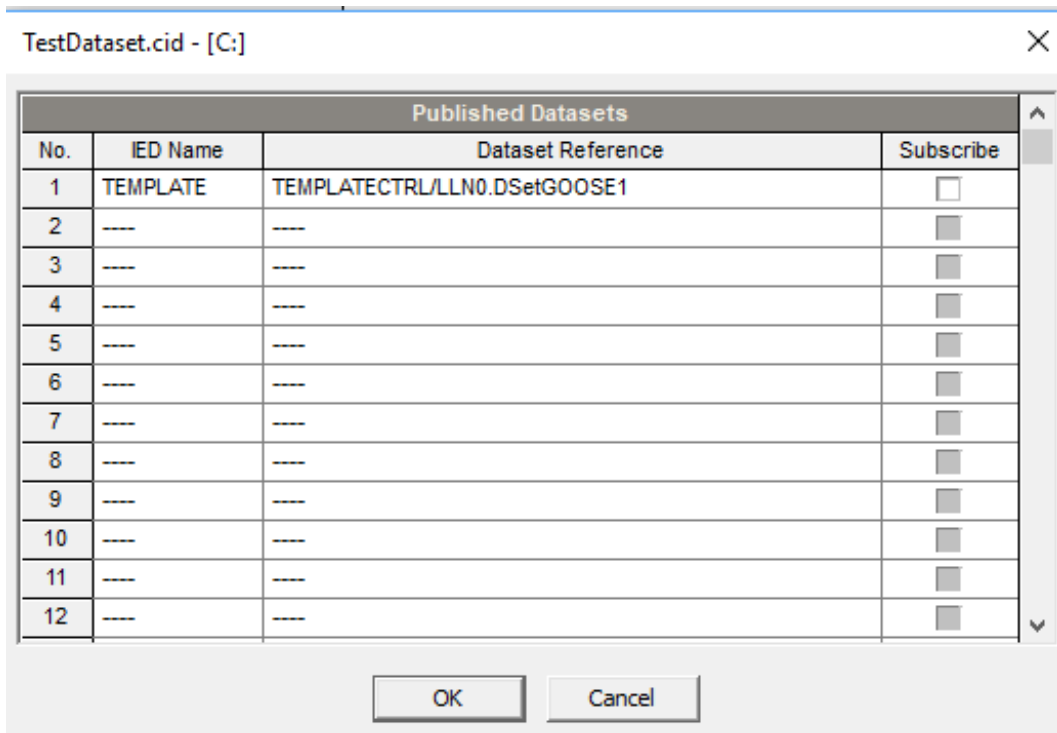
133proUSB - IEC 61850 Setup

IEC 61850 IED Properties		IEC 61850 Datasets		IEC 61850 Reports	
GOOSE Publisher Setup		GOOSE Subscriber Setup		Report Deadbands	
GOOSE Subscriber Settings					
Subscription Number	1				
Subscription Enabled	NO				
Dataset Reference					
Configuration Revision	1				
Destination MAC Address	01:0C:CD:01:01:01				
Application ID	3001				
Mapped GOOSE Message					
No.	Element No.	Member Reference	Type	Input Variable	
1	---		---	---	▼
2	---		---	---	▼
3	---		---	---	▼
4	---		---	---	▼
5	---		---	---	▼
6	---		---	---	▼
7	---		---	---	▼
8	---		---	---	▼
9	---		---	---	▼
10	---		---	---	▼
11	---		---	---	▼
12	---		---	---	▼

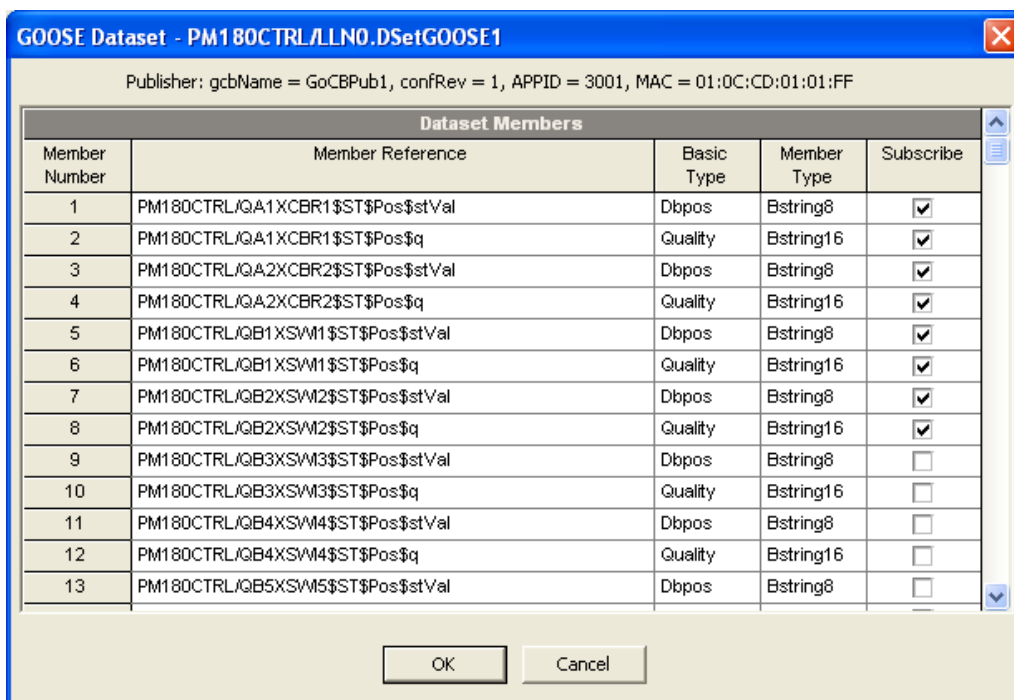
Open Save as... Default Print Send Receive Open SCL File

OK Cancel Apply Help

2. In the Subscription Number box, select the subscription you wish to configure.
3. Click the “Open SCL File” button and open an ICD or CID file for the publishing device you wish to subscribe to. PAS shows you a list of all datasets linked to GOOSE publisher control blocks that are found in the ICD/CID file. Check the Subscribe box for the dataset you wish to subscribe to.

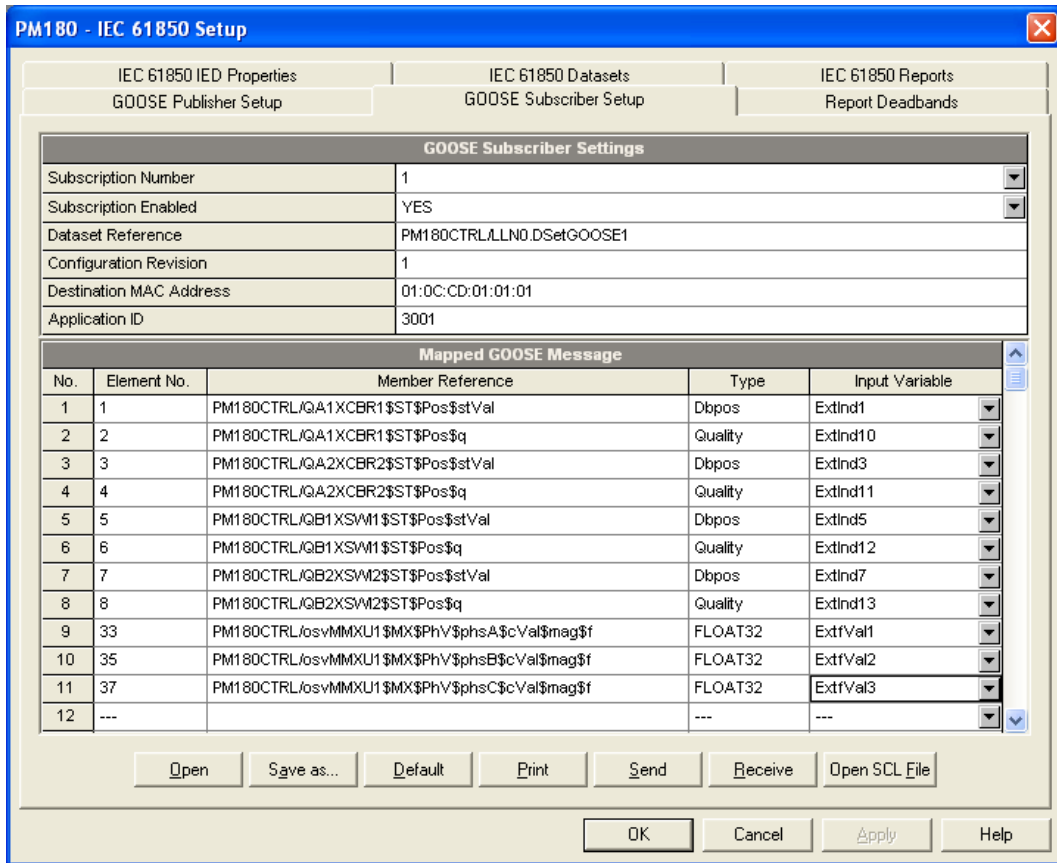


4. The publisher attributes and a list of dataset members for the selected dataset are displayed as shown in the picture below. PAS also indicates a basic IEC 61850 data element type and a physical MMS type for dataset members. Check the Subscribe boxes for elements you want to subscribe to, and then click OK.



You are allowed to select no more than 16 elements. Elements with incompatible data types are not allowed for selection.

The publisher attributes of the selected dataset and the selected data elements are copied to the current subscription.



Select compatible input variables to which dataset elements will be mapped in the device. See the table below for allowable mapping options depending on the basic variable type.

Basic Data Type	MMS Data Type	Compatible Input Variables
BitString32	Bstring32	ExtInd, ExtiVal
Dbpos	Bstring8	ExtInd, ExtiVal
Enum	INT8	ExtInd, ExtiVal
INT32	INT32	ExtInd, ExtiVal
INT32U	INT32U	ExtInd, ExtiVal
INT16	INT16	ExtInd, ExtiVal
INT16U	INT16U	ExtInd, ExtiVal
INT8	INT8	ExtInd, ExtiVal
INT8U	INT8U	ExtInd, ExtiVal
BOOLEAN	BOOLEAN	ExtInd, ExtiVal
FLOAT32	FLOAT32	ExtfVal

NOTES:

- Mapping integer data to a BOOLEAN ExtIcd variable results in copying a least-significant bit of the dataset member only.
 - Mapping double-point data of type Dbpos to a BOOLEAN ExtIcd variable causes a high-order bit of the dataset member to be copied to the following BOOLEAN ExtIcd variable.
5. Check the application ID, configuration revision and destination MAC address to meet the GOOSE publisher attributes.
 6. Select Yes in the Subscription Enabled box to activate the subscription.
 7. Repeat the setup for other subscriptions you wish to configure, and then send your setup to the device and save to the device database. Notice that dataset member names are not stored in the device and will not be displayed when reading the setup from the device unless you saved the setup in the device database on your PC.

6.7 Configuring Report Deadbands

Deadbands for reporting measured analog values can be configured at once via PAS without the need to setup individual deadbands for every data element. If required, you can then change deadbands for individual variables via your IEC 61850 application.

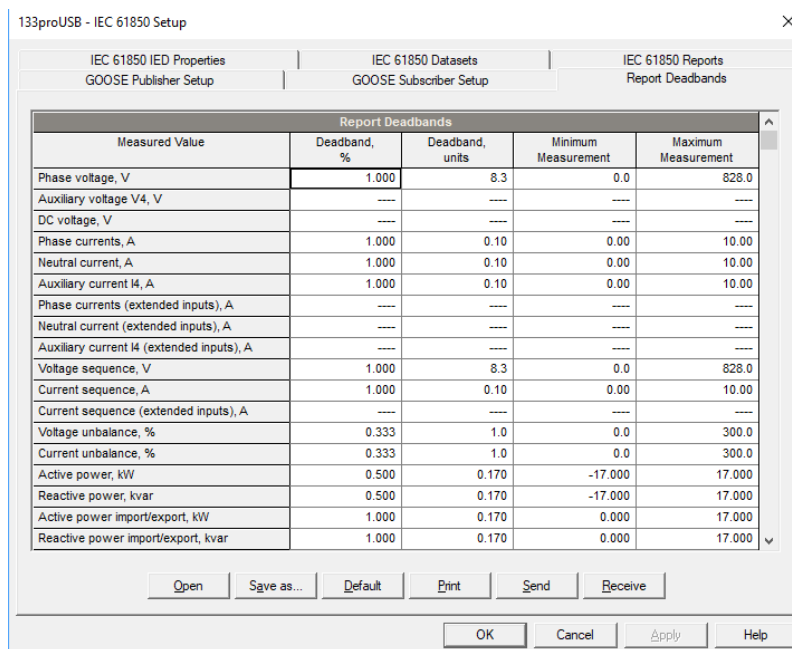
Downloading new report deadbands to the device changes deadbands for all analog data of the same type in all logical nodes, so it is recommended to do that before you make your individual deadband adjustments.

NOTE

The process measurement scales for most analog values depend on your external PT and CT settings and on the voltage and current scales defined in the device. Configure them in your device and save to the device site database before changing report deadbands. See Basic Setup and Device Options Setup in EM235/PM335 PRO Operation Manual on how to configure these parameters in the device. See Programming Analog Inputs in EM235/PM335/PM17X PRO Operation Manual on how to setup the measurement scales for analog inputs.

To configure the deadbands for measured analog values:

1. Select IEC 61850 Setup from the Meter Setup menu, and then click on the Report Deadbands tab.



For your convenience, PAS shows the deadbands both in percent and in engineering units, and also indicates the minimum and maximum process measurements from which the percent deadband is taken.

2. Adjust the default percent deadbands to the desired values as required for your application. The allowable range is 0.001% to 50.000%. Press Enter or click with the left mouse button elsewhere on the dialog window to update the engineering deadbands.
3. Send your setup to the device.

The following table shows the default factory-set deadbands for all measured analog values. Generating a CID File

Measured Value	Default Deadband, %
Phase voltage	1.000
Neutral current	1.000
Auxiliary current I4	1.000
Voltage sequence	1.000
Current sequence	1.000
Voltage unbalance	0.333
Current unbalance	0.333
Active power	0.500
Reactive power	0.500
Active power import/export	1.000
Reactive power import/export	1.000
Apparent power	1.000
Active power demand	1.000
Reactive power demand	1.000
Apparent power demand	1.000
Power factor	5.000
Power factor lag/lead	10.000
Frequency	0.100
Voltage THD	0.100
Current THD	0.500
Voltage interharmonic THD	0.100
Current interharmonic THD	0.500
Current TDD	1.000
Current K-factor	0.100
Analog input #1	1.000
Analog input #2	1.000
Analog input #3	1.000
Analog input #4	1.000
Analog input #5	1.000
Analog input #6	1.000
Analog input #7	1.000
Analog input #8	1.000
Analog input #9	1.000
Analog input #10	1.000
Analog input #11	1.000
Analog input #12	1.000
Analog input #13	1.000
Analog input #14	1.000
Analog input #15	1.000
Analog input #16	1.000

Generating a new or updating a preconfigured CID file for your device is done separately for each configuration setup. The following order is recommended but not mandatory:

- IED properties
- Datasets
- Report control blocks
- GOOSE publisher setup

To create or update a device CID file:

1. Click the "Update CID file" button on the setup tab.
2. Locate a source ICD or CID file for your device you wish to update and click Open. Use the PM13x REV2.icd file provided with your device as a primary template file to create a new CID file, and then use your new file as a source to update remaining settings.
3. Select the folder and the name of the target CID file where to store your new configuration description and click Open. It may be the same CID file you used as the source.
4. Repeat this procedure for other configuration setups you wish to update.

NOTES

- In the event an RCB reference is used as the Report ID (the default setting for non-indexed RCBs), update the RCBs in a CID file after changing the IED name even if no changes to RCBs have been made to keep consistency with your device.